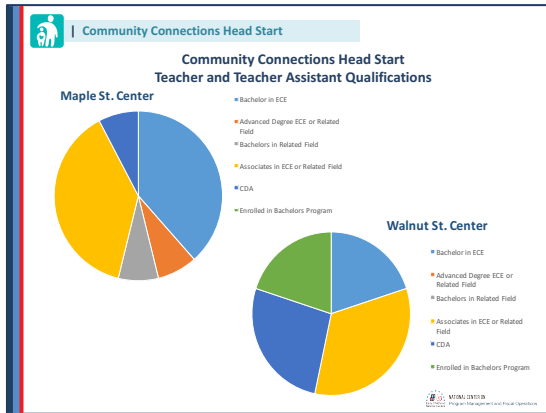


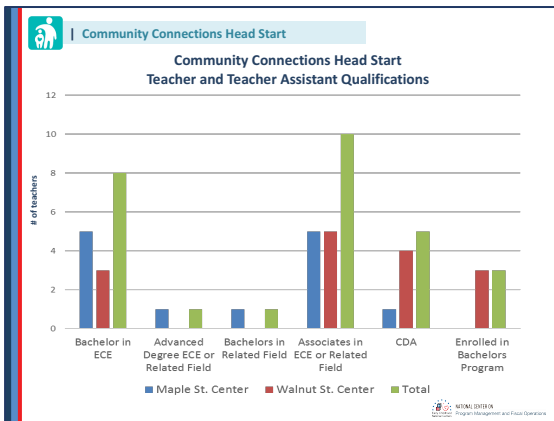
Displaying the Data



Pie Chart

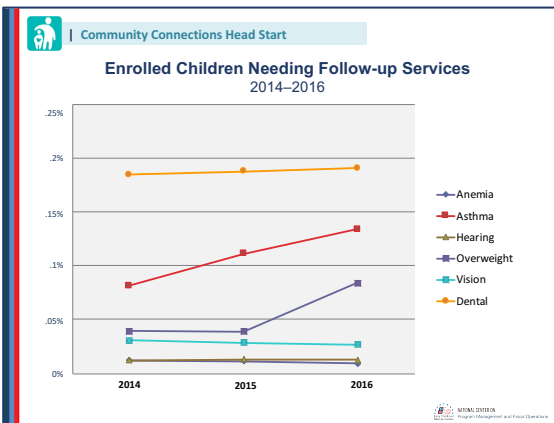
A pie chart shows how often something occurs. Slices or wedges of various sizes show the significance of the occurrence: the larger the slice of the pie, the larger the number of occurrences. The entire pie represents all occurrences.

To create a pie chart, the data must be converted to percentages; each slice represents a percentage of the total. When totaled, the slices equal approximately 100 percent. It is best to use a computer to construct pie charts.



Bar Chart

Use the bar chart to compare many items. It typically presents categories or items along the Y axis, with their values displayed on the X axis. You can also break up the values by another category or group.



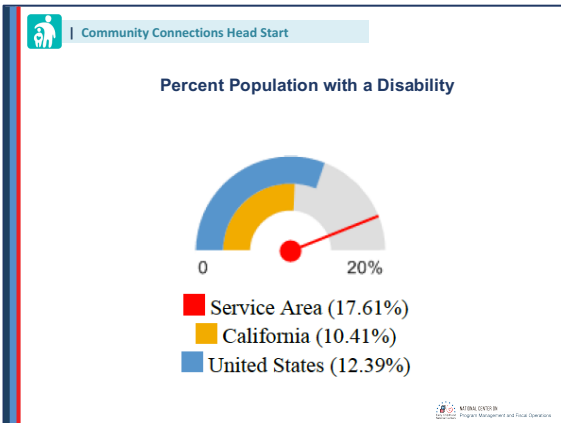
Graph

A graph shows the relationship between two variables. One set of data is plotted on the side of the graph, or the Y axis. Another set is plotted across the bottom, or the X axis.



Area Chart

The area chart looks similar to a line chart, and the areas under each line inside it are filled in with various colors. Hence, it is possible to display this chart as stacked for better comparison. It is particularly helpful if absolute or relative values stacked over a time period are required to be displayed.



Indicator

Indicators are particularly useful when you want to give an instant idea of how well the program is doing on a key performance indicators (KPI). Incorporating a simple “gauge indicator” visualization shows you immediately whether you’re above or below target, and whether you’re moving in the right direction.

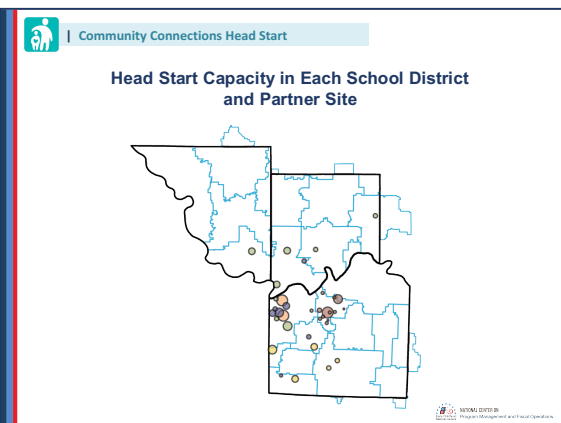
Community Connections Head Start

Community Assessment Population Data

Age	2010 Population	2018 Population	Percent Population Change
Birth-2	4,637	4,221	-0.9%
3-5	4,244	3,992	-0.6%
6-18	18,946	20,253	6.9%
19-44	22,768	19,239	-15.5%
45-64	26,905	31,586	17.4%
65+	14,752	15,917	7.9%
Total	92,252	95,208	3.2%

Pivot Table

A pivot table is a data summarization tool used in the context of data processing. Pivot tables are used to summarize, sort, reorganize, group, count, total or average data stored in a database. It allows its users to transform columns into rows and rows into columns.



Scatter (Area) Map

A scatter map helps viewers visualize geographical data across a region as data points on a map. You can show numeric data using circle color and size to represent the value of your data.