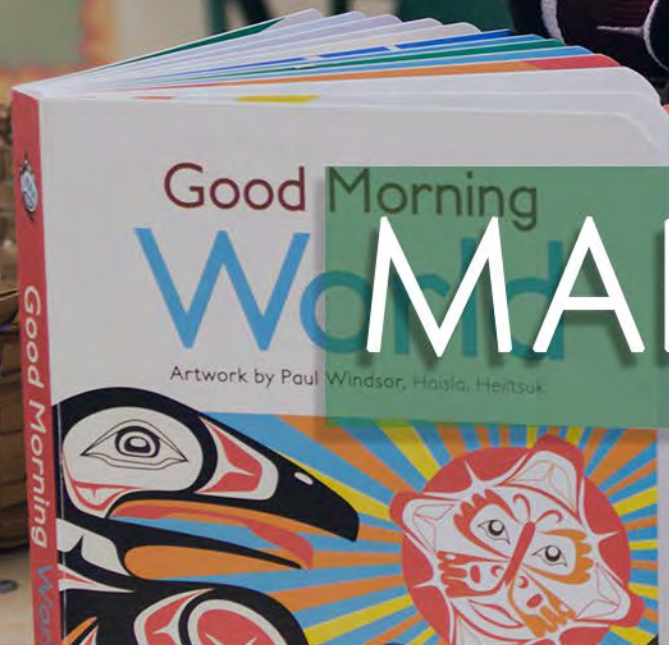




... 15-Minute ...
In-Service Suites



MAKE-BELIEVE PLAY



NATIONAL CENTER ON
Early Childhood Development, Teaching and Learning



Make-Believe Play Stretches Across ELOF Domains

	CENTRAL DOMAINS				
	APPROACHES TO LEARNING	SOCIAL AND EMOTIONAL DEVELOPMENT	LANGUAGE AND LITERACY	COGNITION	PERCEPTUAL, MOTOR, AND PHYSICAL DEVELOPMENT
▲ INFANT/TODDLER DOMAINS	Approaches to Learning	Social and Emotional Development	Language and Communication	Cognition	Perceptual, Motor, and Physical Development
● PRESCHOOLER DOMAINS	Approaches to Learning	Social and Emotional Development	Language and Communication	Mathematics Development	Perceptual, Motor, and Physical Development
			Literacy	Scientific Reasoning	





Make-Believe Play Stretches Across ELOF Domains



- Approaches to Learning
 - Creativity (Infant/Toddler & Preschool)
- Social and Emotional Development
 - Relationships with Other Children (Preschool)
- Language and Literacy
 - Emergent Literacy (Infant/Toddler)
 - Communicating and Speaking (Preschool)
- Cognition
 - Imitation and Symbolic Representation & Play (Infant/Toddler)

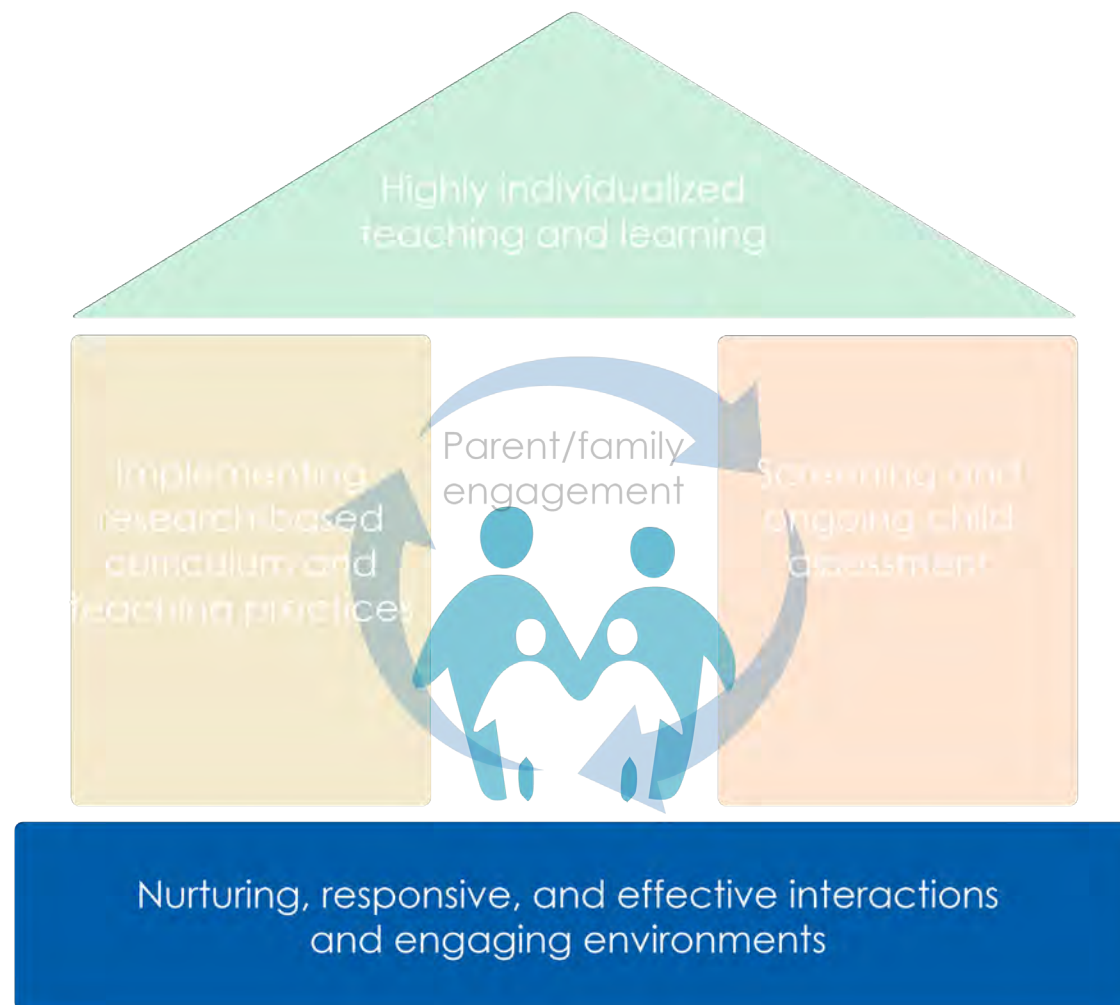


Framework for Effective Practice



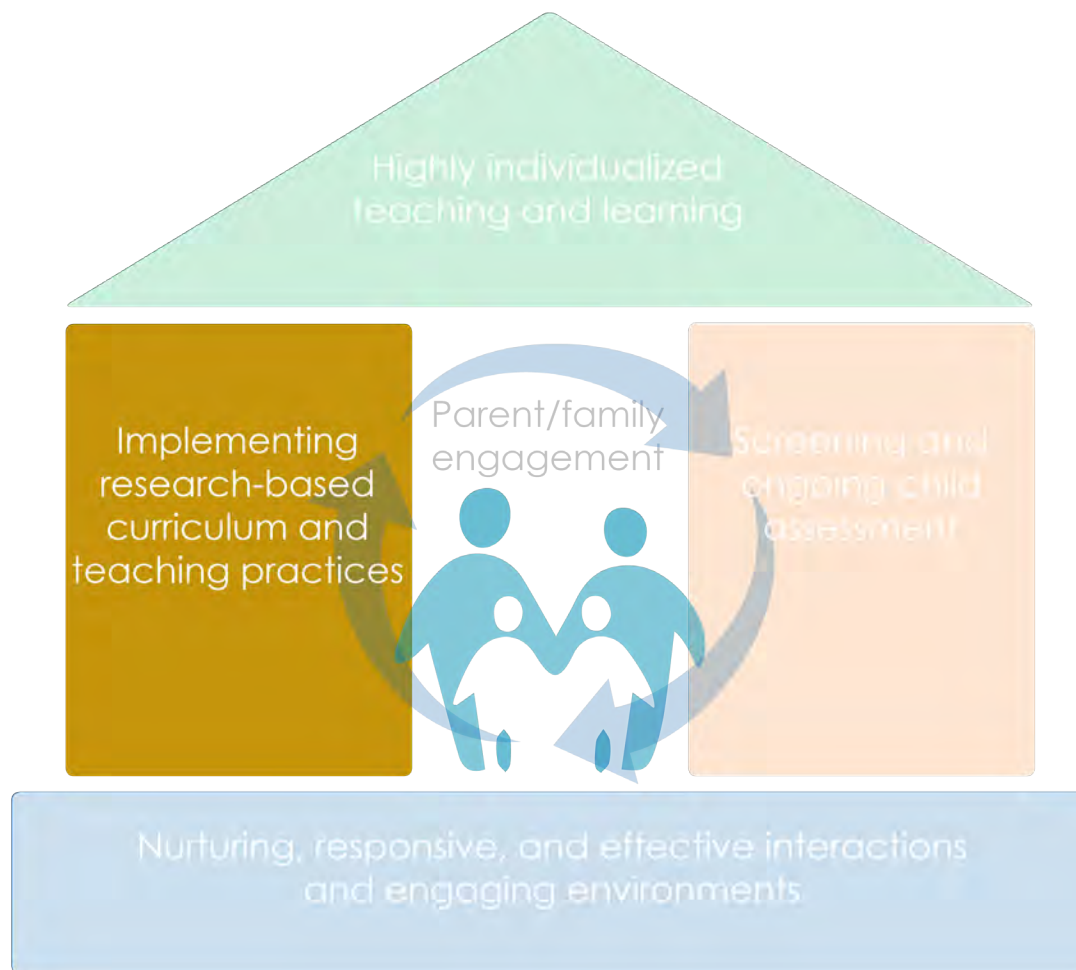


Framework for Effective Practice





Framework for Effective Practice





Session Objectives

- **Identify** the unique key components of make-believe play
- **Describe** what make-believe play looks like
- **Implement** practical ways to support make-believe play in your early learning setting



... 15-Minute ...
In-Service Suites



Foundations of Play

Infants & Toddlers



Foundations of Play



- Play begins with exploration
 - Infants explore new objects to discover what they are and what they do
 - Exploration looks different, depending on a child's understanding of an object or situation
- Exploratory play includes more and more social play (and even the beginnings of pretend play)



Benefits of Infant and Toddler Play

- According to the American Academy of Pediatrics, play:
 - Supports healthy brain development
 - Is one way infants and toddlers interact with their environment
 - Allows children to safely explore their fears and practice adult roles and familiar routines (at home or in the learning environment)
 - Builds relationships between children and their peers and caregivers





... 15-Minute ...
In-Service Suites

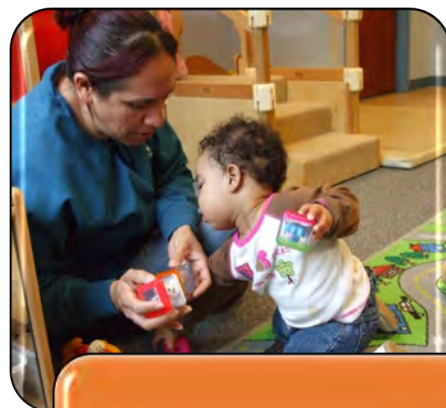


Make-Believe Play

Overview & Development



The Path to Make-Believe Play



Object-
Oriented
Sensorimotor
Actions



Object-
Oriented or
Instrumental
Play



Beginnings of
Make-Believe
Play



Make-Believe
Play



Requirements for Make-Believe Play

Children engage in high-quality make-believe play when they:



Create an imaginary situation



Take on and act out roles



Follow a set of rules determined by roles



Turn and Talk

Think of instances in your own learning environments when you've seen **make-believe play** contribute to children's learning and development, and share with your partner.



Benefits of Make-Believe Play



- Make-believe play provides opportunities to practice many skills:
 - Symbolic thinking
 - Self-regulation
 - Oral language
 - Social and emotional skills
 - Literacy, math, and science skills



... 15-Minute ...
In-Service Suites



Supporting Make-Believe Play

Practical Tips and Tools



Creating an Environment to Support Social Play

- Provide open-ended cooperative-use toys and materials that increase opportunities for social interaction
- Create a physical space that encourages children to share space with other children





Play Themes vs. Curriculum Unit

- A **unit**, or study, is often dictated by a curriculum, and focuses on a concept or general event
- A **play theme** involves the creation of pretend scenarios, pretend roles, and relationships between roles





Play Themes Inspired by Units

- Play themes are often inspired by curriculum units or studies, though it's not a requirement.

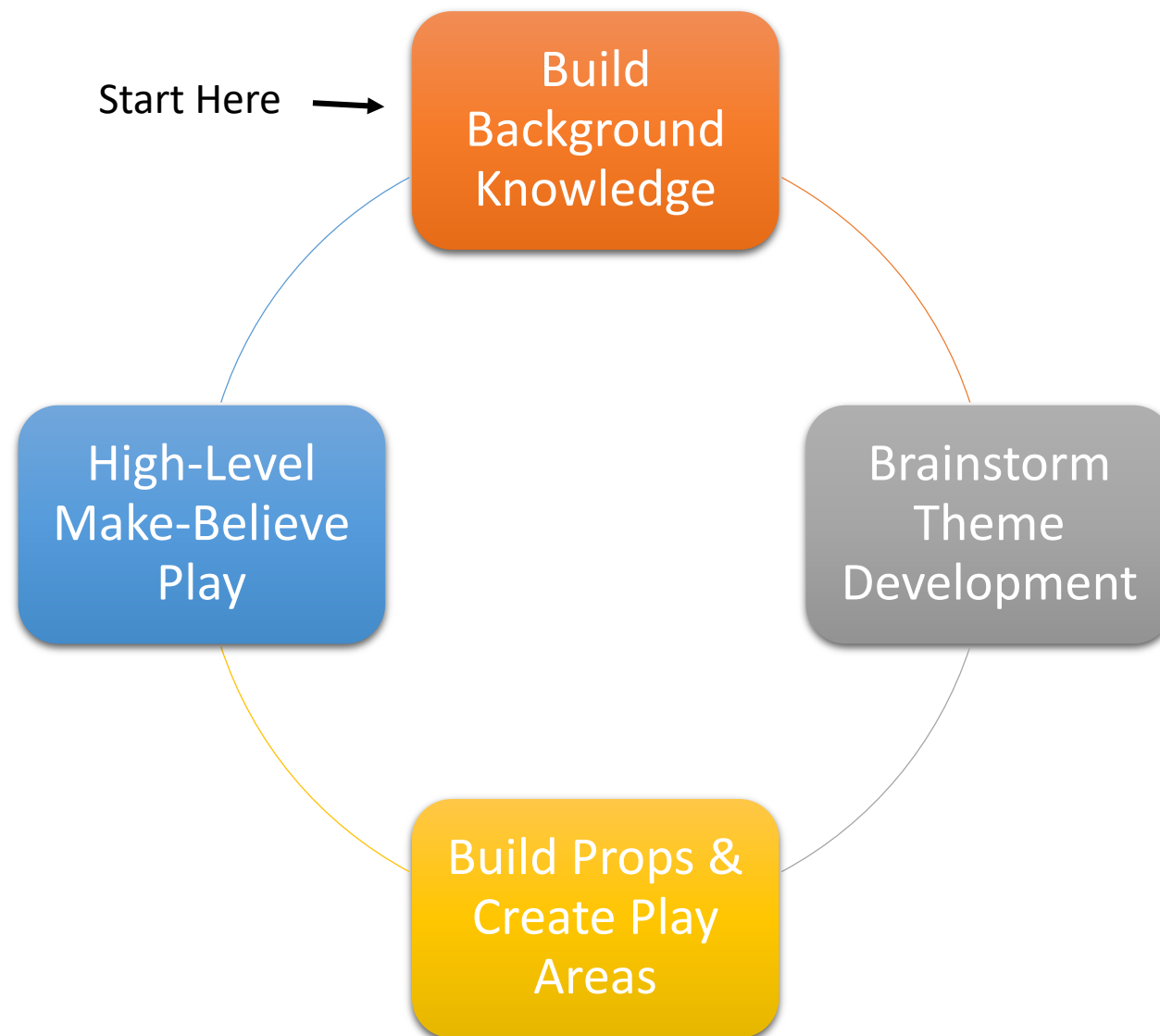
Unit/Study Example	Theme Examples Inspired by Unit/Study
Transportation	Airport, train station, car dealership, cruise ship
Animals	Zoo, farm, vet's office, pet store
Health and Nutrition	Restaurant, farmer's market, fitness center (with foods from different cultures represented by children)
Reduce, Reuse, Recycle	Garden center, farm, recycling center

- You can also choose your play theme based on children's interests!



Cycle of Supporting Make-Believe Play

Once you determine a play theme, you begin the cycle of supporting make-believe play





... 15-Minute ...
In-Service Suites

Supporting All Children in Make-Believe Play

With the appropriate supports, make-believe play can be a fun and engaging experience for *all* children.





... 15-Minute ...
In-Service Suites

Make-Believe Play: Video



NATIONAL CENTER ON
Early Childhood Development, Teaching and Learning



... 15-Minute ...
In-Service Suites

Review



NATIONAL CENTER ON
Early Childhood Development, Teaching and Learning