



... 15-Minute ...
In-Service Suites



STEAM AIAN



NATIONAL CENTER ON
Early Childhood Development, Teaching and Learning





STEAM Stretches Across the ELOF Domains

	CENTRAL DOMAINS				
	APPROACHES TO LEARNING	SOCIAL AND EMOTIONAL DEVELOPMENT	LANGUAGE AND LITERACY	COGNITION	PERCEPTUAL, MOTOR, AND PHYSICAL DEVELOPMENT
▲ INFANT/TODDLER DOMAINS	Approaches to Learning	Social and Emotional Development	Language and Communication	Cognition	Perceptual, Motor, and Physical Development
● PRESCHOOLER DOMAINS	Approaches to Learning	Social and Emotional Development	Language and Communication	Mathematics Development	Perceptual, Motor, and Physical Development
			Literacy	Scientific Reasoning	





STEAM Stretches Across the ELOF Domains



- Cognition (Infant/Toddler)
 - Exploration and Discovery
 - Memory
 - Reasoning and Problem-Solving
- Cognition (Preschooler)
 - Mathematics Development
 - Scientific Reasoning
- Approaches to Learning
- Social and Emotional Development
- Language and Communication
- Perceptual Motor and Physical Development



Red Cliff Early Childhood Center

We were always trying to integrate culture into the curriculum—the science domain, the math domain, etc. Then we realized that culture should be at the base, serving as the foundation, the building block for curriculum development. It was an amazing paradigm shift! We are now making huge gains in integrating language and culture into our early childhood programming.

—The Red Cliff Early Childhood Center





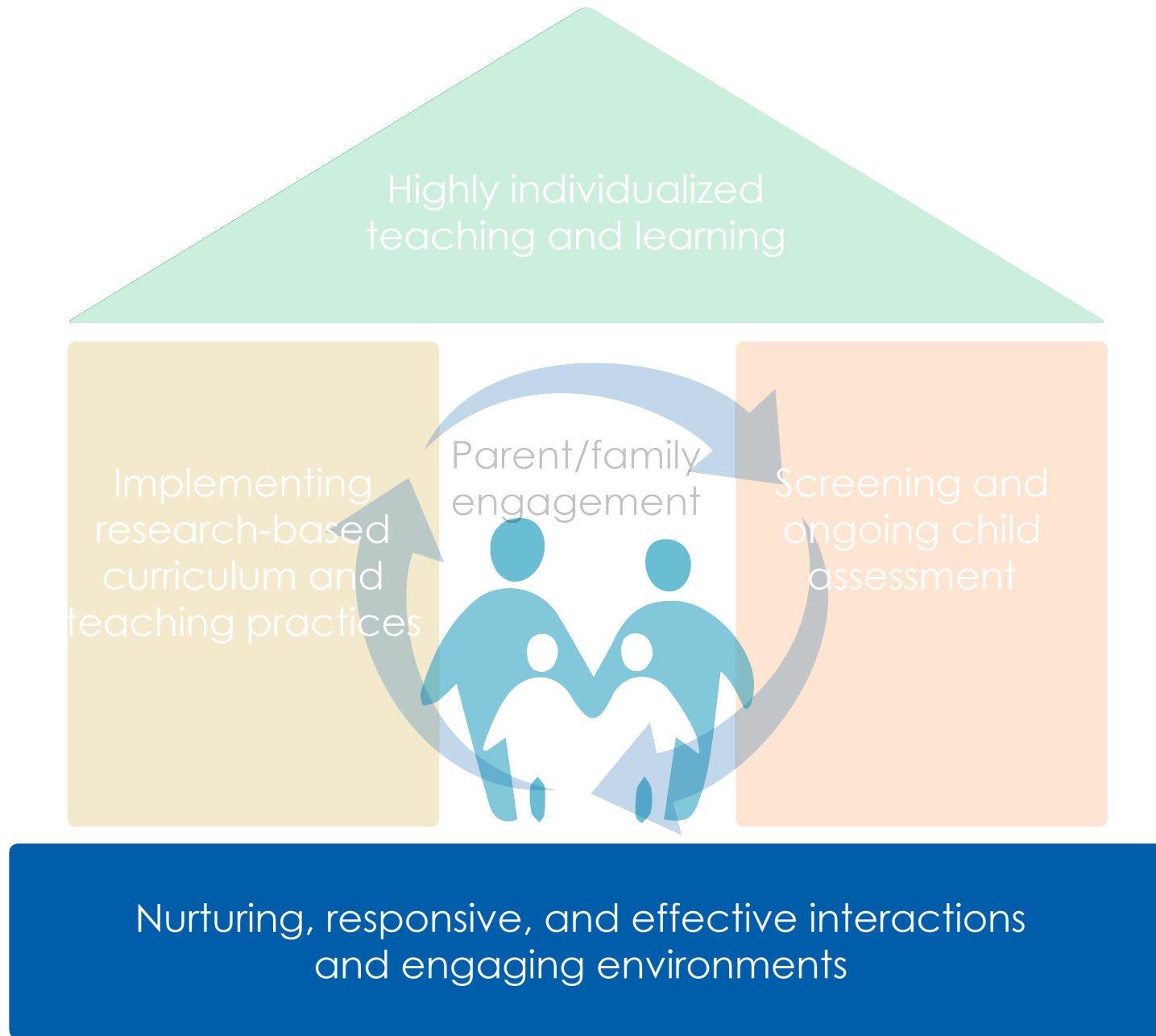
Parent, Family, and Community Engagement

Culturally and linguistically responsive environments can only be created by engaging and partnering with families, Elders, and the community. Establishing a partnership with families and the community is crucial for children's learning and later success in life.



... 15-Minute ...
In-Service Suites







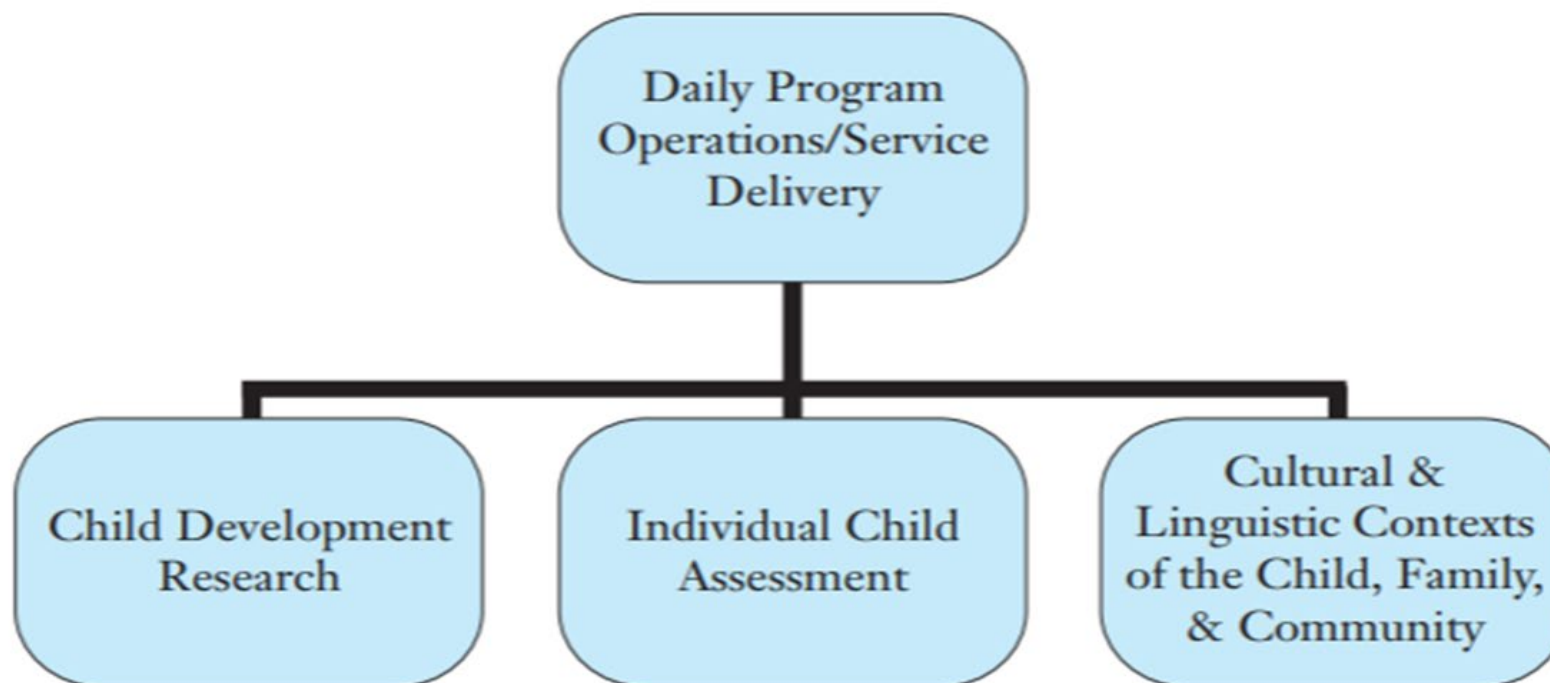
Objectives

- **Identify** ways infants, toddlers, and preschoolers naturally engage in inquiry, reasoning, and problem solving through everyday routines, culture, language, and learning opportunities
- **Describe** how the STEAM components share a common approach and focus
- **Provide strategies** to support children's inquiry and STEAM skills in the early education setting, community, and at home
- **Learn** to use the *Steps and Introduction to Making it Work Guide* to integrate culture and language in lesson plans for STEAM skills



Culturally and Linguistic Responsive Practices

Sources of Developmentally Appropriate Practices



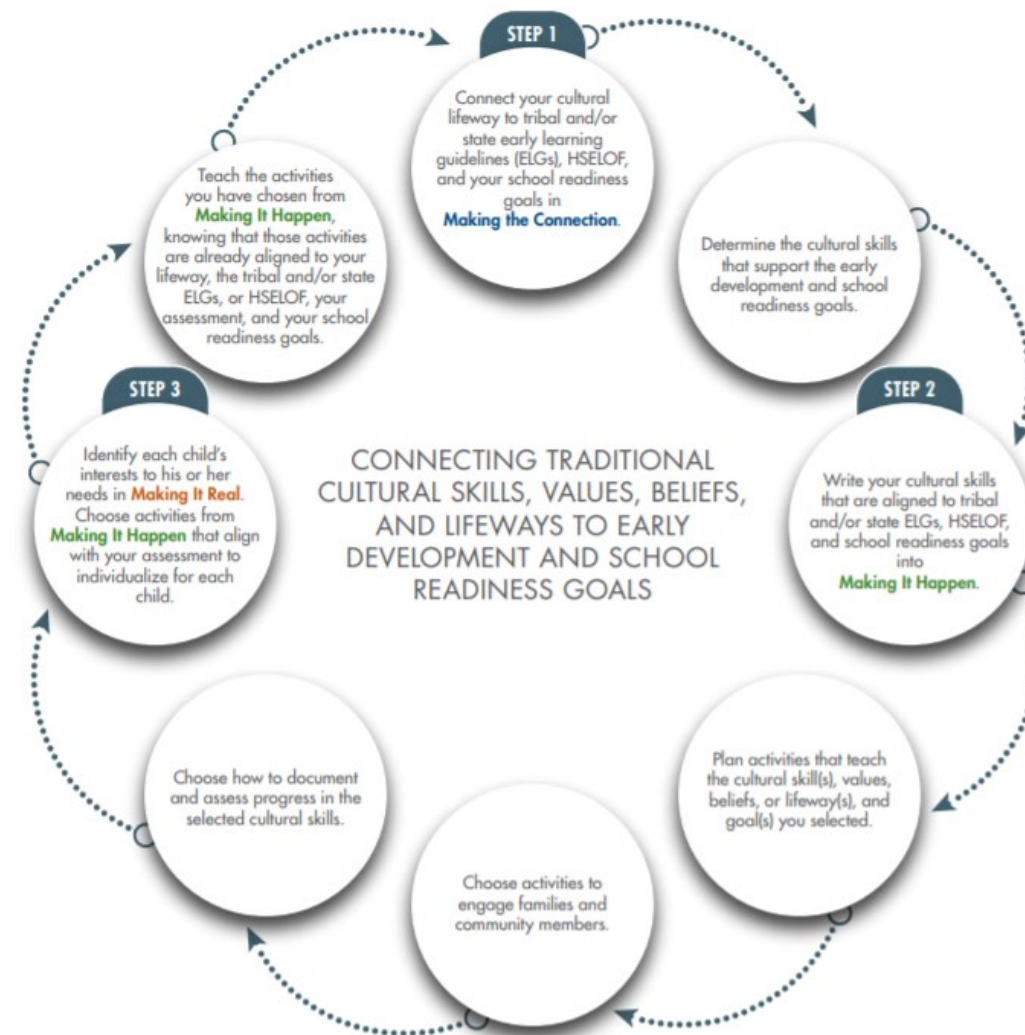


Making It Work

Without language, the canoe, paddle, water, seat, the birds you hear are different than what our ancestors experienced. If you know the language, then you know what our ancestors heard, saw, felt, and experienced.
—Zalmi “Zeke” Zahir, University of Oregon



The *Making It Work* Cycle





... 15-Minute ...
In-Service Suites

What is STEAM?



Science



Technology



Engineering



Art



Math



NATIONAL CENTER ON
Early Childhood Development, Teaching and Learning

STEAM is for Everyone



... 15-Minute ...
In-Service Suites

STEAM is about
how people explore
the world, not
which facts they
know.



NATIONAL CENTER ON
Early Childhood Development, Teaching and Learning



... 15-Minute ...
In-Service Suites

STEAM is All Around



NATIONAL CENTER ON
Early Childhood Development, Teaching and Learning



A Common Approach and Focus



STEAM Mindset



STEAM Knowledge



Language of
STEAM



STEAM-Related
Skills



... 15-Minute ...
In-Service Suites

STEAM Mindset



NATIONAL CENTER ON
Early Childhood Development, Teaching and Learning

Hoop Dancers from Red Cliff Bank of Lake Superior Chippewa



... 15-Minute ...
In-Service Suites

There is a group of teenage Hoop Dancers from the Red Cliff Band of Lake Superior Chippewa who are “stepping out” as young leaders in their community—and it all started when they were very young! In their homes and at Head Start, the girls learned the importance of their family, community, and culture. They developed social relationships while participating in the traditional, cultural music, dance, and art of their community. They learned to share, discuss, and compromise, as they developed confidence and expressed pride in their accomplishments and their culture.



NATIONAL CENTER ON

Early Childhood Development, Teaching and Learning



... 15-Minute ...
In-Service Suites

STEAM Knowledge



NATIONAL CENTER ON
Early Childhood Development, Teaching and Learning



... 15-Minute ...
In-Service Suites

Language of STEAM



NATIONAL CENTER ON
Early Childhood Development, Teaching and Learning



Two-Eyed Seeing



“Two-Eyed Seeing asks us to see our strengths, the best in our ways of knowing, while also asking us to respect and celebrate our differences. Two-Eyed Seeing acknowledges the necessity of formal structure yet that it must be preamble to and receptive of new understandings and opportunities, i.e., understandings associated with ‘Spirit of the East’ which brings the ‘gift of newness, of transformation.’”



Speak The Language Of STEAM

- Observe, observation
- Question
- Predict, prediction
- Similar, different
- Compare, contrast
- Measure
- Count
- Investigate
- Explore
- Experiment
- Test
- Discover
- Record
- Explain
- Hypothesize, hypothesis, guess



Know	Wonder	Learn
Turtles have shells	Where do turtles live?	Turtles come from eggs.
Turtles have 4 feet	What are the shells made of?	Turtles swim.
Turtles might be: black green orange-red	How do the shells feel?	Turtle shells made of bones.
Some turtles live in water.	How old can turtles get?	Some turtles live 100yrs.
Some turtles swim in water.	Do they live in a house?	Some turtles do live in water
Turtles eat carrots.	Do Are they pets?	



... 15-Minute ...
In-Service Suites

STEAM-Related Skills





... 15-Minute ...
In-Service Suites

How We Can Support STEAM Learning



Engaging
Environments



Nurturing, Responsive, &
Effective Interactions



Learning
Experiences/Activities





Engaging Environments

Provide open-ended materials



Use a variety of materials



Engage the senses

Consider children's developmental levels

Pay attention to children's interests



Arrange materials so they are accessible



... 15-Minute ...
In-Service Suites

Nurturing, Responsive, & Effective Interactions



NATIONAL CENTER ON
Early Childhood Development, Teaching and Learning



... 15-Minute ...
In-Service Suites

Learning Experiences/Activities



NATIONAL CENTER ON
Early Childhood Development, Teaching and Learning

Learning Activity: STEAM in Everyday Experiences & Activities



... 15-Minute ...
In-Service Suites





... 15-Minute ...
In-Service Suites

Review

