



Engaging Parents as Advocates and Leaders Webinar Series



Culturally Responsive Parent Engagement July 28, 2020

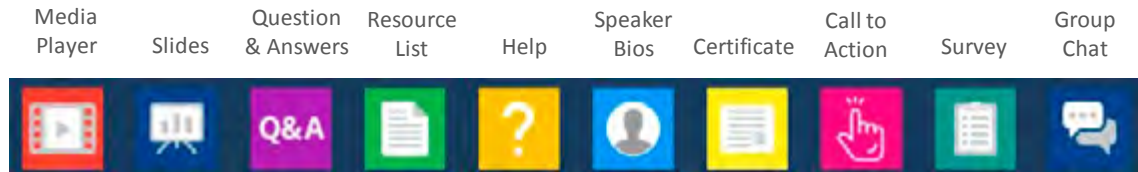
Today's Host






Melia Franklin
Consultant

National Center on Parent, Family,
and Community Engagement



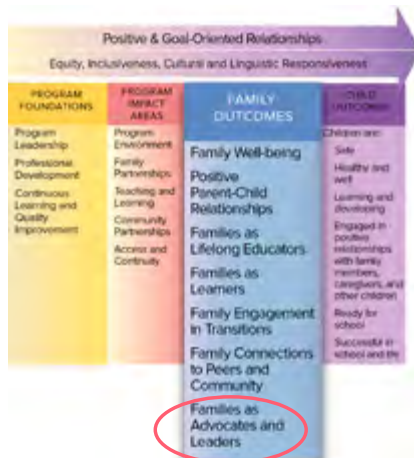
Session Engagement Tools



- Use the controls to minimize or maximize 
- Drag the bottom right hand corner to resize 
- Have a question? Click the Q&A icon 
- Click the icon to download resources & bookmark helpful links 
- Click the icon for tech help 

National Center on Parent, Family, and Community Engagement

Engaging Parents as Advocates and Leaders Webinar Series



National Center on Parent, Family, and Community Engagement

- How to prepare staff to successfully integrate father engagement into their programs
- Tips from programs that engage fathers as leaders and advocates
- Tools, resources, and ideas you can use to create a more “father-friendly” program

Today's Conversation

Developing Leadership Through Culturally Responsive Family Engagement



National Center on Parent, Family, and Community Engagement

Learning Objectives

- Examining the importance of using a culturally responsive parent engagement approach
- Discussing personal biases and their impact on building mutual respect and trust with families
- Highlighting programs that are engaging families from diverse backgrounds as leaders and advocates



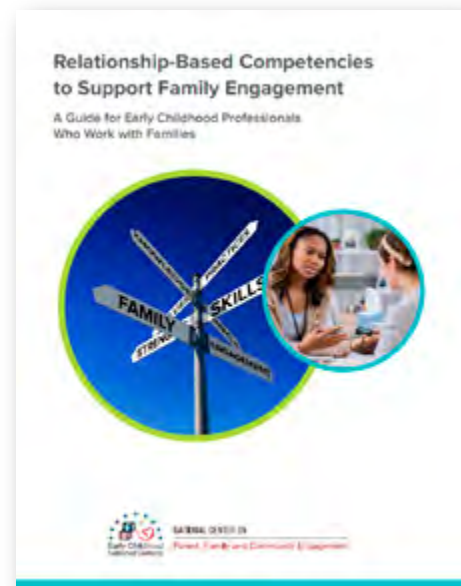
National Center on Parent, Family, and Community Engagement

Highlighted Resource

Relationship-based Competencies to Support Family Engagement

Competency 2: Self-Aware and Culturally Responsive Relationships

Practice: Respects and responds to the cultures, languages, values, and family structures of each family



National Center on Parent, Family, and Community Engagement

Poll

What practices you currently use in everyday interactions with families in your program?



National Center on Parent, Family, and Community Engagement

Our Presenter



Pam Greenough Corrie
Head Start/Early Head Start Director
Mt Hood Community College Child Development
& Family Support Programs

National Center on Parent, Family, and Community Engagement

At Head Start, Culturally Responsive Family Engagement Is “Baked In”!

“...create welcoming program environments that incorporate the unique cultural, ethnic, and linguistic backgrounds of families in the program & community;”



1301.4 Parent committees.
1302.50 Family engagement.
1301.3 Policy council and policy committee.

National Center on Parent, Family, and Community Engagement



- 1400 children in 24 locations
- Partnership with community college that offers:
 - Child development and family support programs
 - Training and TA in 6 languages
 - Culturally specific family child care networks
 - Parents in decision-making roles (Policy Council and more!)

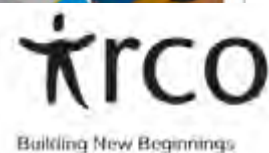


National Center on Parent, Family, and Community Engagement

How to Be Culturally Responsive...

...when parents speak six different dialects?

- Partnership with IRCO: Immigrant and Refugee Community Organization
- IRCO is able to offer culturally and linguistically specific services designed to empower families



National Center on Parent, Family, and Community Engagement

Responding to Change

- Changing demographics in Multnomah County
- Addressing barriers: linguistic, social isolation
- Preschool Promise allowed HS to create a Burmese classroom with staff who speak their language and know their culture.



National Center on Parent, Family, and Community Engagement

Strategies for Success

- Attitude of humility
- Use data from community assessment to plan programs, recruitment materials, grants
- Create career pathways and hire staff that are representative of families served
- Build strong partnerships with community-based organizations



Career Pathways: Lulose Claude participated in an MHCC course that helps immigrants obtain the CDA and learn English at the same time.

Photo from The World

National Center on Parent, Family, and Community Engagement

Relationships Inspire Leadership

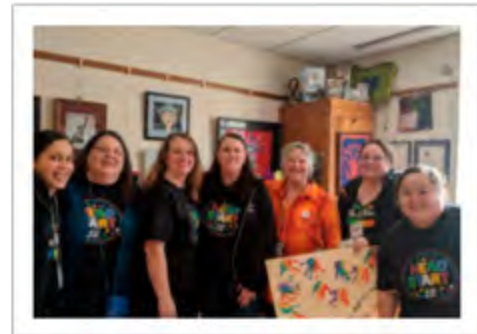
- Home visits
- Staff who speak major dialects and understand culture
- Encourage parents to become staff!
- Meet parents where they are
- Parents always welcome in classroom
- Home language valued
- Planning is based on what parents want for their children

Relationship building requires us to be curious, listen, share observations, and ask open-ended questions to learn more about families.

National Center on Parent, Family, and Community Engagement

Continuous Learning and Reflection

- Recent events inspire deeper learning, reflection on issues of race inequities and bias within our HS community
- As white administrators, we need to step up to do this work with our white colleagues



National Center on Parent, Family, and Community Engagement

Poll

How do culturally and linguistically diverse parents engage in our program as advocates and leaders?



National Center on Parent, Family, and Community Engagement

Our Presenters

SUN P-3 Program

SUN Community Schools Prenatal to 3rd Grade Program



Mani Xaybanha

Program Specialist, Youth and Family Services
Division -- SUN Service System

Multnomah County Human Services
Department



Utica Abdullah

Former Parent Leader/Program Coordinator
P-3 Program at Sacramento Elementary

Immigrant and Refugee Community Organization
(IRCO)

National Center on Parent, Family, and Community Engagement

Two-Way Benefits of Engagement

When families' language and culture is accepted and parents are engaged...

- Your program will learn to better understand and serve the community
- Families will feel a sense of ownership over their children's education, as well as leadership skills and career pathways



National Center on Parent, Family, and Community Engagement

P-3's Parent Leadership Approach

- Diverse, parent-centered family engagement
- P-3 (pre-natal to 3rd grade)
- 11 Community Schools
- Culturally responsive, developmentally appropriate parent-centered activities
- Honors parent as their child's first teacher
- Empowers parents to be effective leaders



National Center on Parent, Family, and Community Engagement

Opportunities for Families



National Center on Parent, Family, and Community Engagement

Play and Learn Groups

Modeled after [Kaleidoscope Play & Learn Guidelines](#) to:

- promote inclusion
- build relationships
- promote school readiness
- elevate the voices of parents



National Center on Parent, Family, and Community Engagement

Play and Learn Principles

- Whole Child, Whole Family, Whole Community approach
- Collaborative: Driven by the community's values, wishes, and needs
- Inclusive: Intentionally reflects participants' cultures, languages, and preferences
- Relationship-based: Creates supportive community for learning and connection



National Center on Parent, Family, and Community Engagement

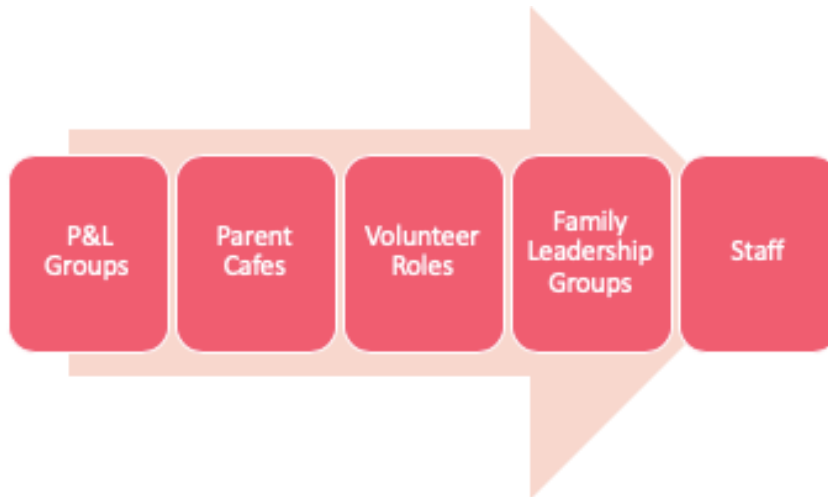
Principles in Action

- Parent decision-making and leadership built in
- Staff reflective of community
- Culturally and linguistically specific activities



National Center on Parent, Family, and Community Engagement

Intentional Leadership Pathways



National Center on Parent, Family, and Community Engagement

Examples of Impact

- Reaching marginalized communities, family to family
- Elevating parent voice
- Creating a bridge between families and schools
- Career and leadership pathways



National Center on Parent, Family, and Community Engagement

A Parent Leader's Story

- Journey from Parent Leader to Program Coordinator



National Center on Parent, Family, and Community Engagement

Invitation to Reflect

- How does your program reach marginalized, underserved communities?
- How does your program elevate parent voices and include them in decisions?



National Center on Parent, Family, and Community Engagement

Poll

As a result of what you learned in this webinar, what is one practice you will try to implement or prioritize over the next 90 days?



National Center on Parent, Family, and Community Engagement

Thank You!



National Center on Parent, Family, and Community Engagement

Head Start Resources

Culturally responsive family engagement resources on ECLKC include:

- Family Engagement and Cultural Perspectives: Applying Strengths-based Attitudes
- Cultural Perspectives in Caregiving: Applying Relationship-Based Practices
- Enhance Parents' Advocacy and Leadership Skills | ECLKC

National Center on Parent, Family, and Community Engagement

MyPeers Communities

- ✓ **PFCE Deepening Practice Communities**
 - Already a MyPeers member? Find the **PFCE Deepening Practice** community in MyPeers under “All Communities,” and select the blue “Join” button.
 - Not a member of MyPeers? Sign up!
 - ✓ Visit the MyPeers page on the Early Childhood Learning Knowledge Center (ECLKC).
 - ✓ Scroll to the bottom and select “Create an Account.”
 - ✓ Fill out the form and within a few days you will receive an email from MangoApps with your login information.

National Center on Parent, Family, and Community Engagement

Want to Take Your Family Engagement Practice to the Next Level?

Sign Up for Text4FamilyServices Today!

- This FREE text messaging service was designed for family services providers.
 - It is also available in Spanish (español).
- Just text **“PFCE”** to **22660** to sign up!



National Center on Parent, Family, and Community Engagement



For more information, please contact us:
PCFE@ecetta.info | 1-866-763-6481