



 NATIONAL CENTER ON
Parent, Family and Community Engagement

Building Community Partnerships to Sustain Program Progress

Session 5b



Family Services
Manager Institute

Welcome and Introductions



Brandi Black Thacker, MA, MSW
Director of Training and Technical Assistance Collaboration



Joelfre Grant, MAT
Training and Technical Assistance Specialist



National Center on Parent, Family, and Community Engagement

2

Session Audience Console

The screenshot shows the audience console for the 2020 Virtual Family Services Manager Institute. The main content area displays a slide with the National Center on Parent, Family and Community Engagement logo and several circular images of people. To the left is a Media Player with a red 'Enable Adobe Flash Player' button. Below it is a Q&A section with a text input field and a submit button. To the right is a Resource List with items like 'PPT Handout', 'Engagement Tools Description', 'Reflect and Plan Handout', and 'Dare to Lead'. Below the Resource List is a Speaker Bio for Dr. Guylaine L. Richard. A navigation bar at the bottom contains icons for video, slides, Q&A, speaker, document, chat, and help. The text 'National Center on Parent, Family, and Community Engagement' is at the bottom left, and the number '3' is at the bottom right.

Reflection

Share Your Thoughts Using the Q & A Tool.

- **What are your community's strengths?**
- **How can you work with community partners to build on those strengths to benefit children and families?**

The photograph shows a woman with glasses and a man in a yellow shirt sitting at a table, engaged in a conversation. A yellow circular icon with a question mark and an answer bubble is overlaid on the image. The text 'National Center on Parent, Family, and Community Engagement' is at the bottom left, and the number '4' is at the bottom right.

Learning Objectives

- Explore a pathway for active collaboration
- Identify “outside of the box” ideas for partnering in new and innovative ways



National Center on Parent, Family, and Community Engagement

5

Key Messages

- Creating a shared vision between engaged community partners fosters and strengthens family well-being.
- Strong and sustained partnerships require ongoing engagement between all stakeholders.



National Center on Parent, Family, and Community Engagement

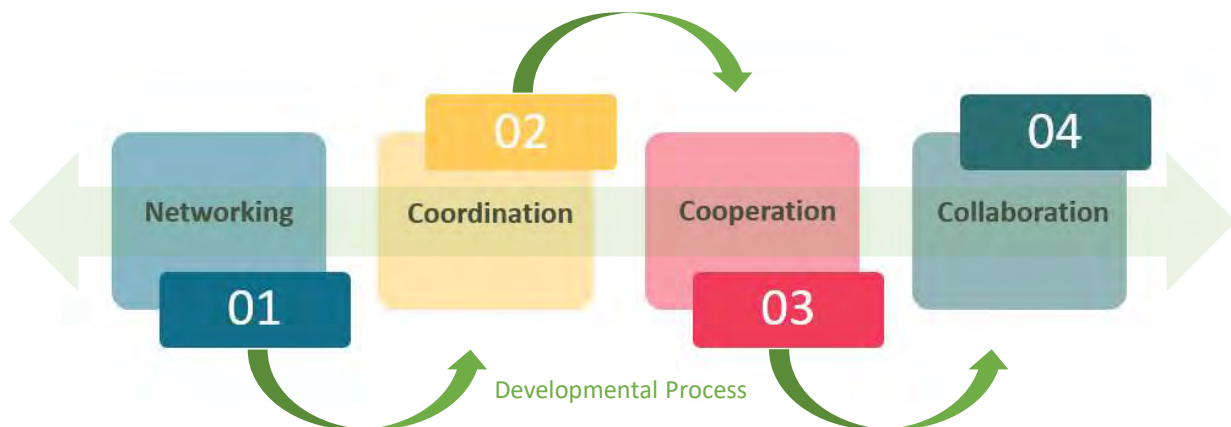
6



National Center on Parent, Family, and Community Engagement

7

Developmental Continuum of Collaboration



Adapted from the QUILT (Quality in Linking Together) Project (Community Development Institute, Education Development Center, & National Child Care Information Center). QUILT was funded by the U.S. Department of Health and Human Services, Administration for Children and Families, 2002.

National Center on Parent, Family, and Community Engagement

8

Networking
01

Staff exchange information about community programs and services.

National Center on Parent, Family, and Community Engagement 9

02
Coordination

Staff work with other community agencies to avoid duplication of efforts or to fill gaps in services.

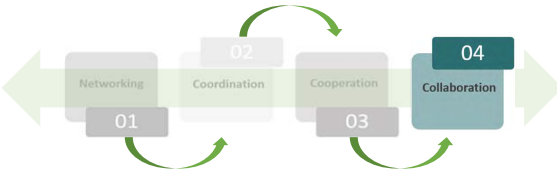
National Center on Parent, Family, and Community Engagement 10



Cooperation
03

Two or more programs conduct joint activities to meet their individual program goals.

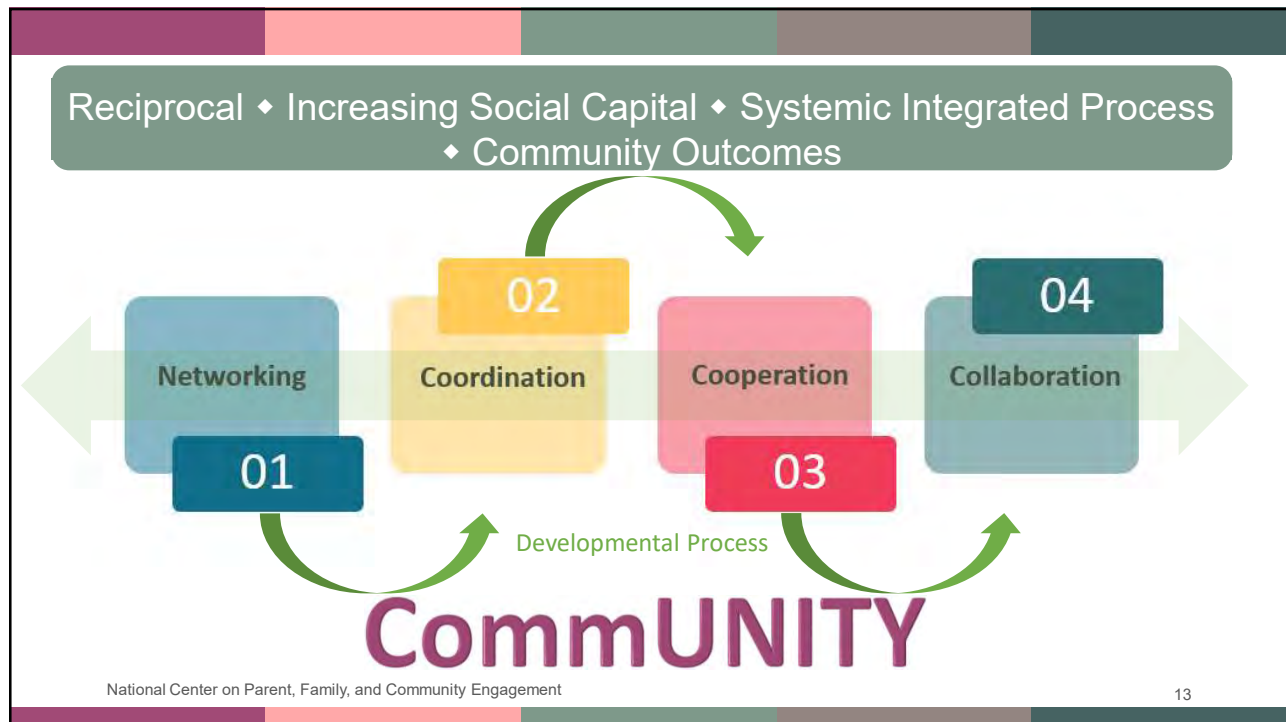
National Center on Parent, Family, and Community Engagement 11



04
Collaboration

Programs work together toward common goals that could not be achieved by any program acting alone.

National Center on Parent, Family, and Community Engagement 12



Pop Quiz: Multiple Choice!

1. Program A and Agency B work together to support children with disabilities
2. When parents need job training or placement program A reaches out to Agency C to fill a gap
3. In order to increase safety of the neighboring park, Head Start staff partner with the police and other agencies
4. Head Start staff post flyers at the new laundromat to share information about the program with families in the community

A. Networking
B. Coordinating
C. Cooperating
D. Collaborating

National Center on Parent, Family, and Community Engagement 14

Benefits of Community Engagement for Children and Families

- Increase access
- Reduce confusion
- Create learning environments
- Increase community safety and responsiveness



National Center on Parent, Family, and Community Engagement

15

Benefits of Community Engagement for Program Staff

- Assist with community assessments
- Manage resources
- Enhance program planning
- Feel renewed in their work
- Acquire new viewpoints
- Reduce risks
- Contribute to the community



National Center on Parent, Family, and Community Engagement

16

Benefits of Community Engagement for Communities

- Create community solutions
- Decrease duplication of effort/more efficiency
- Expand benefits to other families
- Strengthen communities



National Center on Parent, Family, and Community Engagement

17

Wrap Up

- Community engagement requires shared vision, commitment, and intentional planning.
- Building relationships with community partners is a flexible process. It mirrors the involvement to engagement journey we travel with families.



National Center on Parent, Family, and Community Engagement

18

Resources

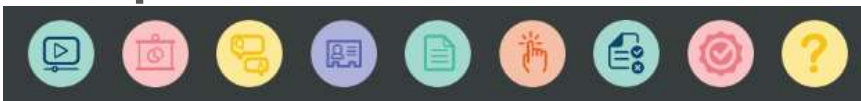
- Engaging Community Partners to Strengthen Family Services Series
- Reflect and Plan handout



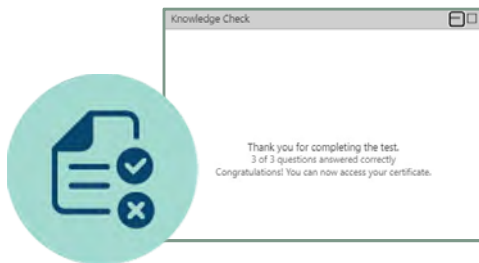
National Center on Parent, Family, and Community Engagement

19

Knowledge Check and Certificate of Completion



Media Player Slides Question & Answers Speaker Bios Resource List Call to Action Knowledge Check Certificate of Completion Help



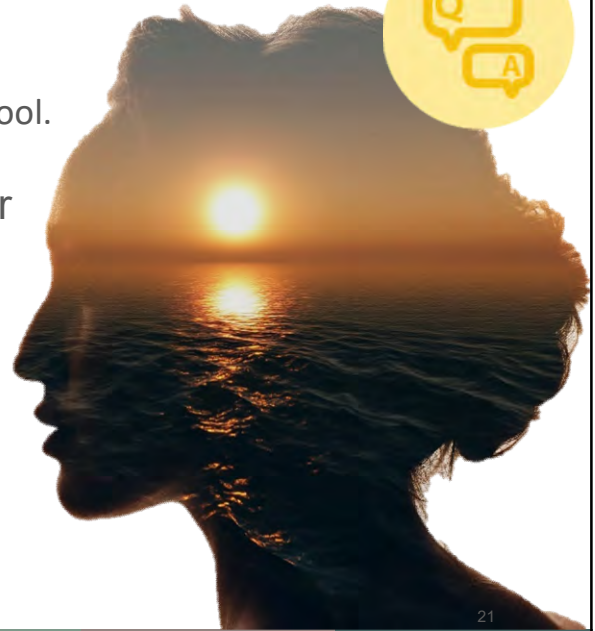
National Center on Parent, Family, and Community Engagement

20

Reflection

Share Your Thoughts Using the Q & A Tool.

- How do you currently plan for community partnerships?
- What new strategies could you try to enhance your community engagement efforts?



National Center on Parent, Family, and Community Engagement

21



NATIONAL CENTER ON
Parent, Family and Community Engagement

For more information, please contact us:
PCFE@ecetta.info | 1-866-763-6481