

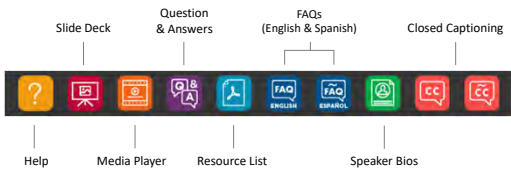
July 27, 2021
Increased Opportunity and Learning for Children with Disabilities

Host
Jennifer Fung,
NCECDTL

Guest Expert
Angel Fettig,
NCECDTL


1

Webinar Features



Slide Deck Question & Answers FAQs (English & Spanish) Closed Captioning

Help Media Player Resource List Speaker Bios



2

Your Presenters



Jennifer Fung




Angel Fettig



3

Agenda


1. Discuss the importance of increased learning opportunities
2. Describe strategies for planned, supported instruction
3. Explore strategies in action




4

Learning Goals


1. Describe an evidence-based approach to embedded instruction
2. Identify tools to support staff and families to plan for multiple learning opportunities



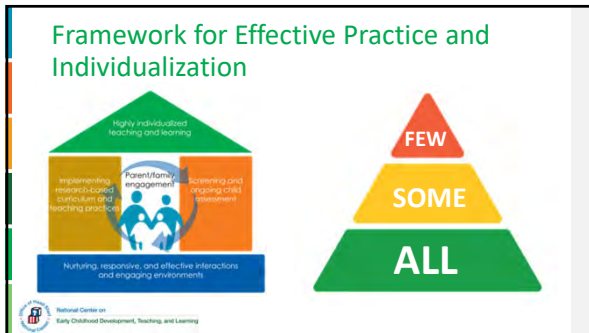
5



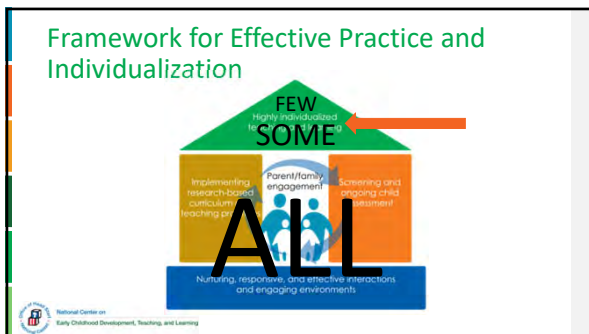
Framework for Effective Practice



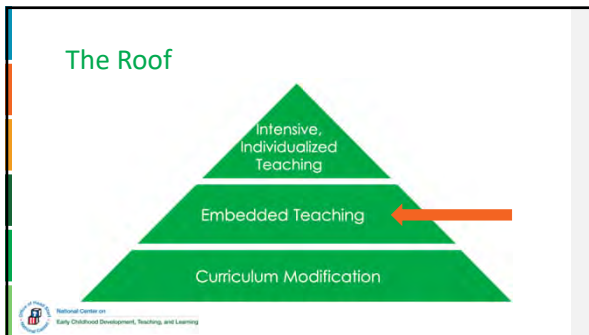
6




7



8



9




Increased Opportunity Using Embedded Instruction

National Center on Early Childhood Development, Teaching, and Learning

10

Embedded Instruction: What?

- Short, planned interactions that provide opportunities for learning priority goals
- Occur within ongoing activities, routines and transitions




National Center on Early Childhood Development, Teaching, and Learning

11

Embedded Instruction: Why?

- Takes advantage of existing routines
- Require minimal change
- Maximizes motivation
- Enhances generalization



National Center on Early Childhood Development, Teaching, and Learning

12




Supporting Implementation

National Center on Early Childhood Development, Teaching, and Learning

13

Successful Implementation




National Center on Early Childhood Development, Teaching, and Learning

14

Embedded Instruction: How?

- What to teach
- When to teach




National Center on Early Childhood Development, Teaching, and Learning

15

Embedded Instruction: How?

- How to teach
- How to evaluate



National Center on
Early Childhood Development, Teaching, and Learning


16

One Child, One Team!



National Center on
Early Childhood Development, Teaching, and Learning

17



Embedded Instruction in Action

National Center on
Early Childhood Development, Teaching, and Learning

18

What to Teach: Routines-Based Interview

Focuses on:

- Engagement
- Independence
- Social relationships



National Center on Early Childhood Development, Training, and Learning

19

What's In a Routines-Based Interview?

Main concerns

- What the day looks like
- When concerns are
- Develop goals

National Center on Early Childhood Development, Training, and Learning

20

RBI: How Do We Select a Goal?

"Let's make a list of what you'd like to work on"

"If you could only choose one thing to work on, what would it be?"

National Center on Early Childhood Development, Training, and Learning

21

How to Teach: Parent-Implemented Instruction

- Collaborative
- Embedded
- Demonstrate
- Practice
- Goals




National Center on
Early Childhood Development, Training, and Learning

22

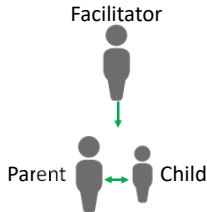
Triadic Interaction Strategies

Strategies used by a facilitator during parent-child interactions to expand and build interactions that are pleasurable for both partners and supportive of children's development, while also recognizing and strengthening the natural competence of parents as they interact with their children.



23

Triadic Interactions



National Center on
Early Childhood Development, Training, and Learning

24

Triadic Interaction Strategies

- Establish a dyadic context
- Affirm parent competence
- Focus attention
- Provide developmental information
- Model
- Suggest



National Center on
Early Childhood Development, Training, and Learning

25

Establish a Dyadic Context



26

Affirm Parent Competence



27

Focus Attention



28

Provide Developmental Information

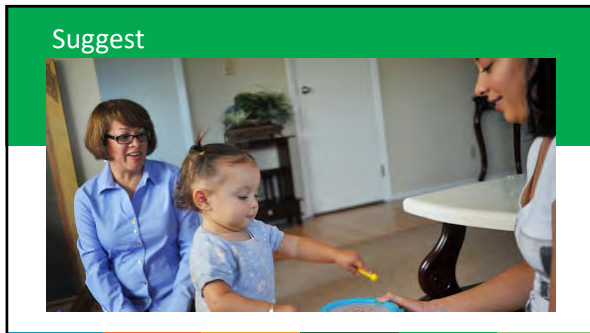


29

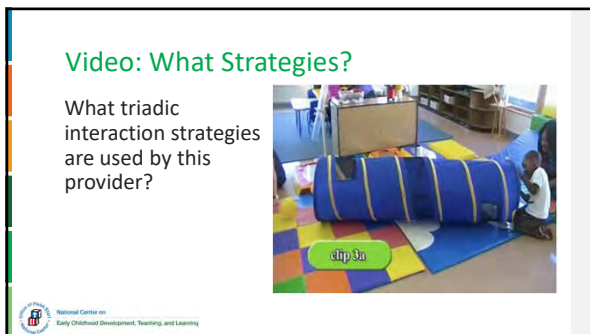
Model



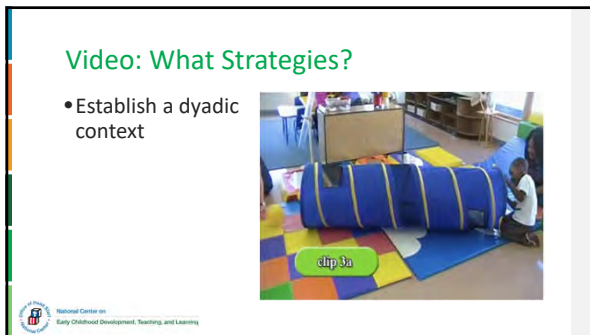
30



31




32



33

Video: What Strategies?

What triadic interaction strategies are used by this provider?




clip 8

National Center on
Early Childhood Development, Teaching, and Learning

34

Video: What Strategies?

- Affirm parent competence
- Provide developmental information
- Establish a dyadic context



clip 8

National Center on
Early Childhood Development, Teaching, and Learning

35

Question & Answer Time



National Center on
Early Childhood Development, Teaching, and Learning

36




PUSHPLAY
DTL On Demand


Get access to more
webinars and resources



37

Thank
You!



 National Center on
Early Childhood Development, Teaching, and Learning

This training was supported by the Administration for Children and Families (ACF) of the United States (U.S.) Department of Health and Human Services (HHS) as part of a financial assistance award totaling \$10,200,000 with 100% funded by ACF. The contents are those of the author(s) and do not necessarily represent the official views of, nor an endorsement, by ACF/HHS, or the U.S. Government. This resource may be duplicated for noncommercial uses without permission.

38
