



# Head Start Center for Inclusion: Guide to New and Upcoming Resources

The new inclusion resources described in this guide are coming soon to the updated Head Start Center for Inclusion (HSCI) website. These resources include printable handouts, abbreviated training suites, and a video on the importance of strong partnerships with Part C providers to improve outcomes for young children with disabilities and their families. Many of the resources in this guide focus specifically on implementing evidence-based practices with infants and toddlers with disabilities. The catalogue is organized by resource type, and resources are listed alphabetically. Also included is an overview of the updates coming to the website.

## Catalogue – New Inclusion Resources.....2

Explore a variety of new resources in the sections below:

- **Handouts**
  - **Disabilities Information Guides**  
These guides offer a starting place for educators looking to familiarize with the characteristics of several common disabilities, and take initial steps to support children with those disabilities.
  - **Frequently Asked Questions: Infants and Toddlers**  
This set of handouts addresses frequently asked questions about supporting infants and toddlers with disabilities.
  - **Tips for Educators: Infants and Toddlers**  
A series of professional knowledge guides for educators to reference when implementing inclusion practices for infants and toddlers.
- **Mini Suites: Infants and Toddlers**
  - A variety of abbreviated training suites with accompanying learning activities and resources about evidence-based inclusion practices for infants and toddlers.
- **Video: Infants and Toddlers**
  - A video on how to leverage the partnership with Part C providers to enhance services provided to infants and toddlers with disabilities and their families.

## Head Start Center for Inclusion Website Update.....4

Website relaunch coming Fall 2020!



# Catalogue – New Inclusion Resources

## Disabilities Information Guides

- **Autism Spectrum Disorder**
  - An overview of common features and diagnosis of Autism Spectrum Disorder (ASD), with tips for educators to support children with ASD in inclusive settings.
- **Cerebral Palsy**
  - An overview of the characteristics and diagnosis of cerebral palsy, along with practical tips for educators who serve children with cerebral palsy.
- **Down Syndrome**
  - An overview of common characteristics and diagnosis of Down Syndrome, with suggestions for evidence-based practices that educators can implement to support children with Down Syndrome.
- **Fetal Alcohol Syndrome**
  - An overview of the possible characteristics and diagnosis of Fetal Alcohol Syndrome, with tips for educators serving children with FAS and their families.
- **Spina Bifida**
  - An overview of the typical characteristics and diagnosis of spina bifida, as well as tips for educators to support children with spina bifida in inclusive environments.

## Frequently Asked Questions: Infants and Toddlers

- **Embedded Learning Opportunities**
  - A guide with answers to educators' frequently asked questions about creating Embedded Learning Opportunities for infants and toddlers with disabilities.
- **Practice Based Coaching**
  - A guide with answers to educators' frequently asked questions about using the Practice Based Coaching model to implement effective inclusion practices for infant and toddlers with disabilities.
- **Suspension and Expulsion**
  - A guide with answers to educators' frequently asked questions about the nature and prevention of suspension and expulsion for infants and toddlers with disabilities.

## Tips for Educators: Infants and Toddlers

- **All About Individualized Family Service Plans (IFSPs)**
  - A tip sheet describing the purpose, development, and implementation of an IFSP, and offers tips for education staff to stay involved throughout the process.
- **All About Universal Design for Learning for Infants and Toddlers**
  - A tip sheet outlining the Universal Design for Learning framework and how it can be implemented by education staff in infant and toddler program settings, with practical tips and reflection questions to support implementation.
- **All About Working with Part C Providers**
  - A tip sheet for education staff about the role that Part C providers play in supporting children with disabilities, with tips for developing partnerships with Part C providers to increase the benefits to children and their families. This guide is an ideal complement to the *Partnering with Part C Providers* video below.



## Mini Suites: Infants and Toddlers

- **Activity Matrix for Infants and Toddlers**
  - An abbreviated training suite for education staff on using an Activity Matrix to structure routines and activities throughout the day to support the individual goals of infants and toddlers with disabilities. This suite includes optional learning activities and a variety of printable resources.
- **Curriculum Modifications for Infants and Toddlers**
  - An abbreviated training suite for education staff on implementing Curriculum Modifications in inclusive infant and toddler program settings. This suite includes learning activities and a variety of printable resources.
- **Embedded Learning Opportunities for Infants and Toddlers**
  - An abbreviated training suite for education staff on using Embedded Learning Opportunities with infants and toddlers with disabilities. This suite includes a learning activity and a variety of printable resources for educators.
- **Routines-Based Planning for Infants and Toddlers**
  - An abbreviated training suite for education staff on routines-based planning for infants and toddlers with disabilities. This suite includes learning activities and a variety of printable resources for educators.

## Video: Infants and Toddlers

- **Partnering with Part C Providers**

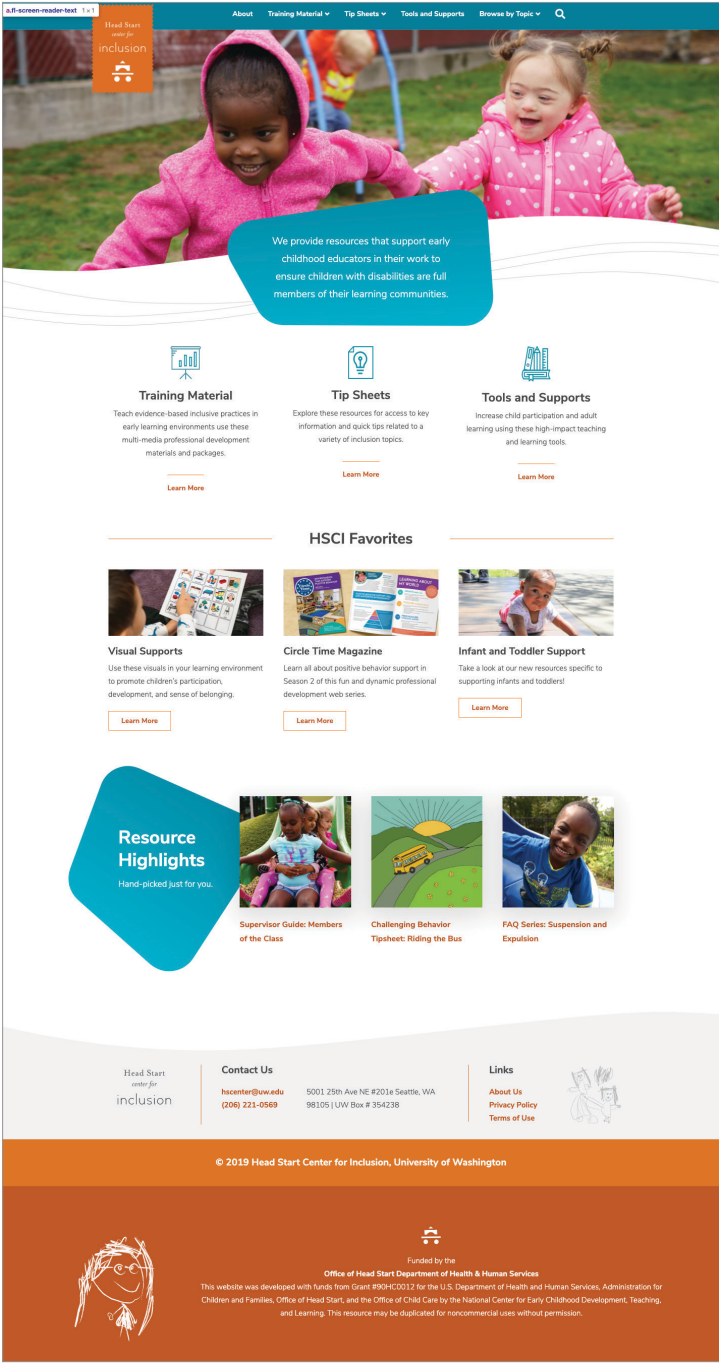
In this video, education staff, disabilities coordinators, family service coordinators, Part C providers, and families can hear directly from Early Head Start and Part C providers about the many benefits of partnering with one another, and learn about effective strategies for leveraging that partnership.



# Head Start Center for Inclusion

## Website relaunch coming soon!

The Head Start Center for Inclusion website is currently undergoing a refresh. The new site, along with the infant and toddler resources listed here, will be launched in Fall of 2020. This refresh includes an improved user-friendly navigation system, an upgraded platform, mobile access, current file formatting, and a new and improved look!



HEAD START CENTER FOR INCLUSION FUNDED BY THE OFFICE OF HEAD START DEPARTMENT OF HEALTH AND HUMAN SERVICES

This document was developed with funds from Grant #90HC0012 for the U.S. Department of Health and Human Services, Administration for Children and Families, Office of Head Start, and the Office of Child Care by the National Center for Early Childhood Development, Teaching, and Learning. This resource may be duplicated for noncommercial uses without permission.

Spring 2020