

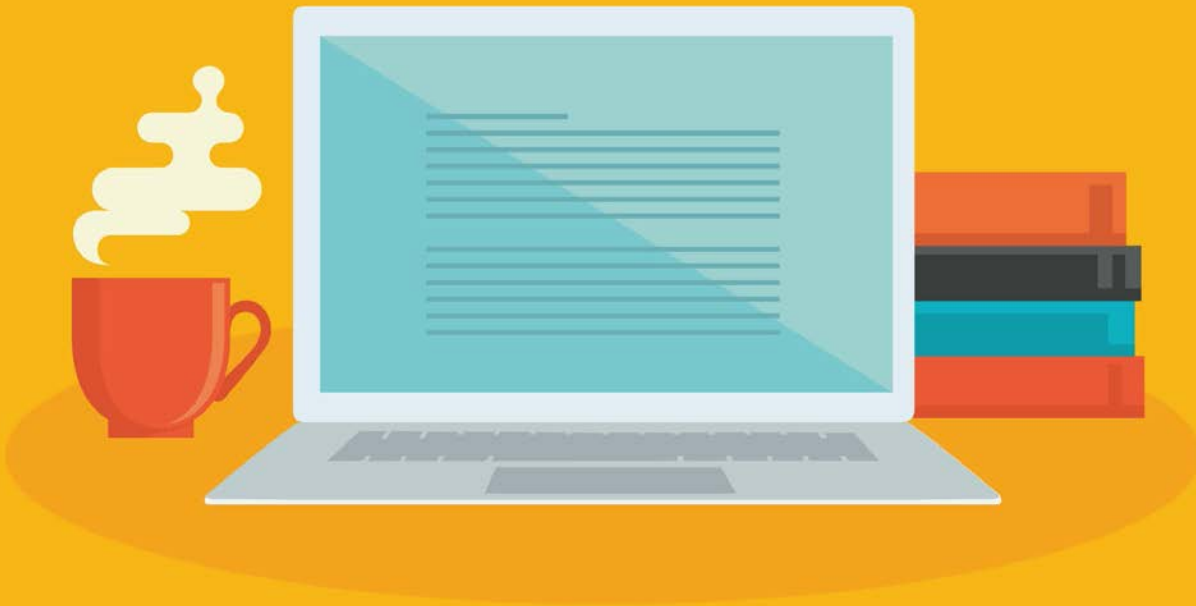
# Selecting Quality Online Professional Development

April 2020

Presenters:

Allyson Dean, NCECDTL

Brittany King, NCECDTL



Early Childhood  
National Centers

NATIONAL CENTER ON

Early Childhood Development, Teaching and Learning

# Session Objectives

At the end of this presentation, you should be able to:

- Describe the benefits of online professional development (PD).
- Use tips to identify and select quality online PD.
- Explain different online learning styles.
- Share information about the Individualized Professional Development (iPD) Portfolio on the ECLKC.

“Online professional development, when it is done well, has the opportunity to change teachers’ practice.”

Source:

“Advantages of Online Professional Development” The National Academies Press

<https://www.nap.edu/read/11995/chapter/3>



# Tips for Choosing Online PD



- ✓ Be Intentional
- ✓ Understand the learner
- ✓ Remove barriers
- ✓ Prepare learners for success

# Tips for Choosing Online PD

- ✓ Make sure it is easy to get help
- ✓ Keep it simple
- ✓ Create a community of learners
- ✓ Be a learner

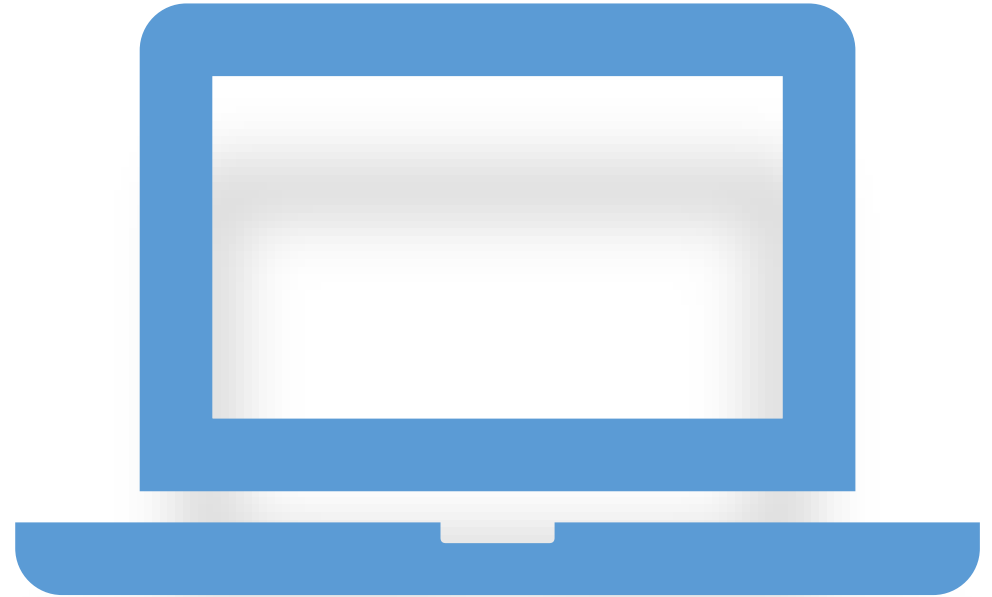


# What is Your Why?



# Asynchronous Learning

- Self-paced
- Audio & Video
- E-mail
- Discussion forum
- Wiki and Blog
- Webcasting and conferencing
- Game-based learning



## What does it consist of?

- Chat and IM
- Video and audio conference
- Live webcasting
- Application sharing
- Whiteboard
- Polling
- Virtual classrooms



# Who? What? How?



# Scenarios

|       | Head Start Director                               | Head Start Education Manager                      |
|-------|---|---|
| WHY?  | Raising awareness and knowledge                   | Application of skill                              |
| WHO?  | Variety of roles                                  | Education staff                                   |
| WHAT? | Specific policy                                   | Specific teaching or home visiting practice       |
| HOW?  | Online asynchronous with built in knowledge check | Online content with follow up in practice setting |

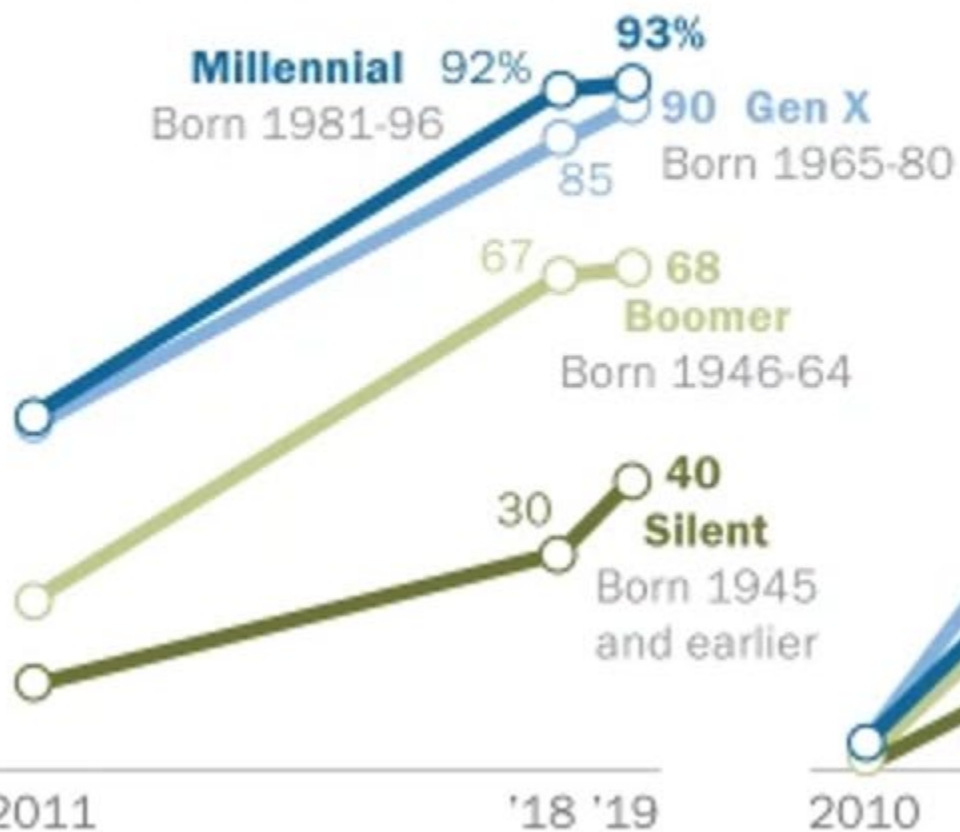


Millennials  
73 million in US in 2019  
More than half of the workforce

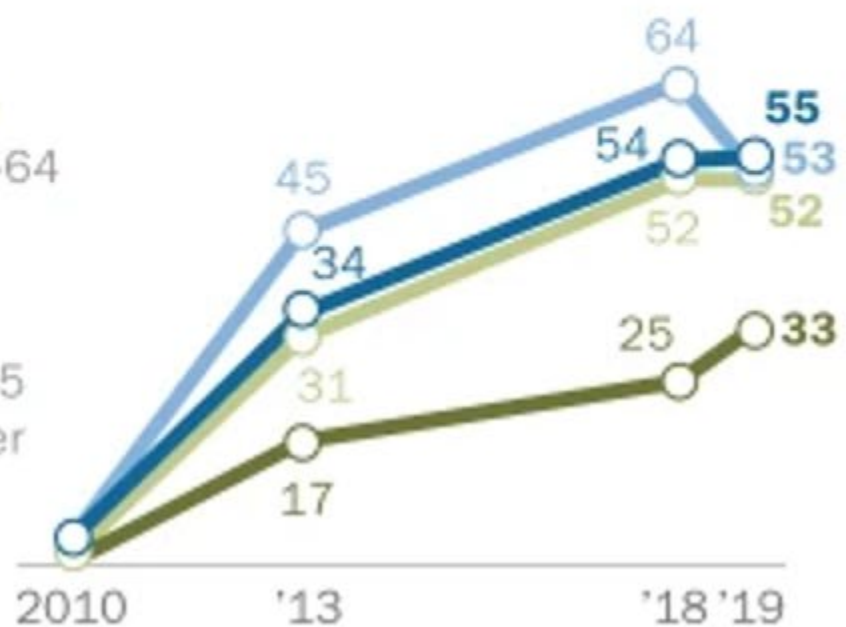
# Data on Use of Technology

% of U.S. adults in each generation who say they ...

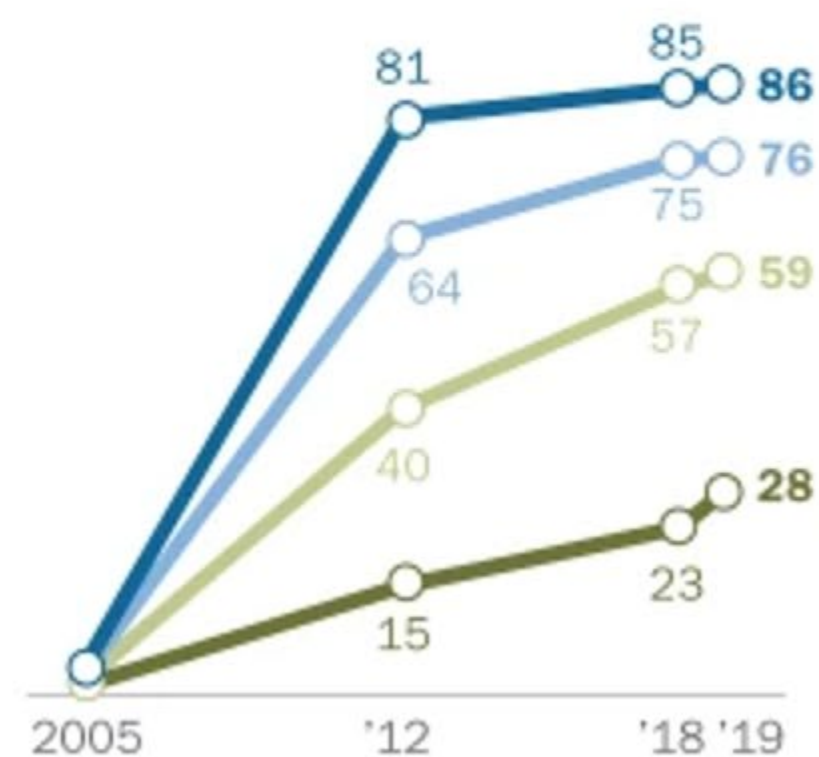
## Own a smartphone



## Own a tablet computer



## Use social media



Note: Those who did not give an answer are not shown.



# Modern Learners

---

Quick to try new technology

---

Value knowledge over just getting a degree

---

Don't feel the need to be in a classroom to learn

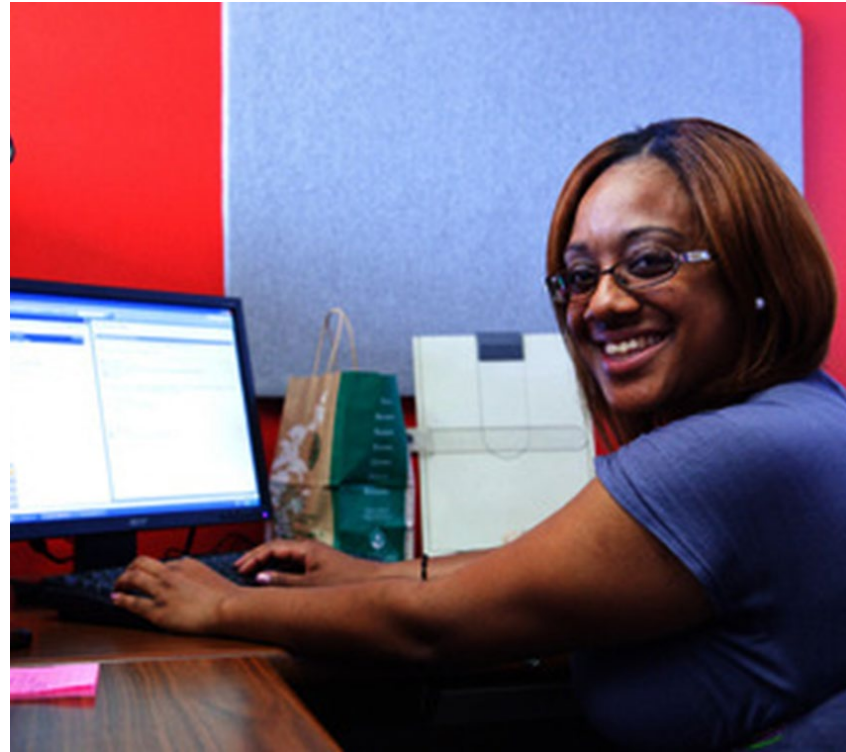
---

Prefer schedule flexibility and on-demand style information

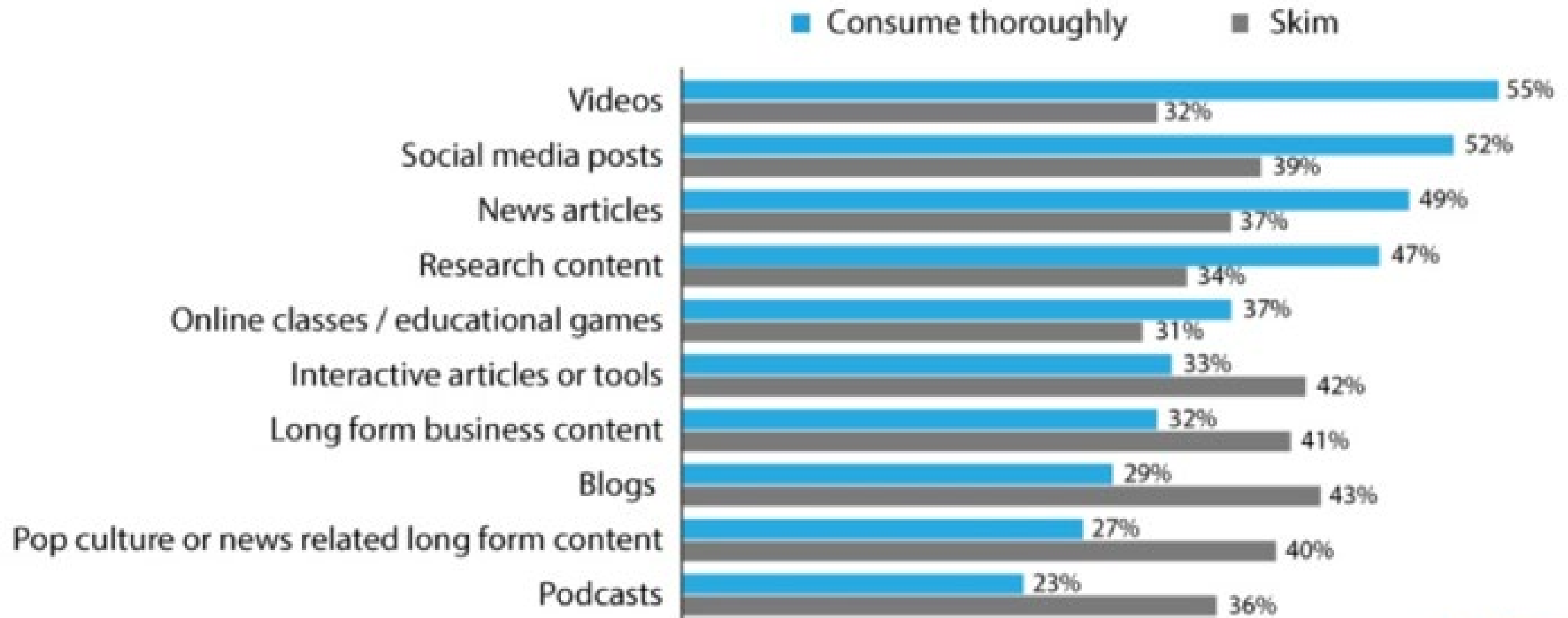
---

Source: SH!FT DISRUPTIVE ELEARNING (March 2019) <https://www.shiftelearning.com/blog/training-millennials-elearning>

# HOW



## When it comes to content, what do you closely pay attention to and what are you less attentive to (e.g., skim)?



Base: 1091 Global Consumers  
Source: HubSpot Consumer Behavior Survey, Q1 2016

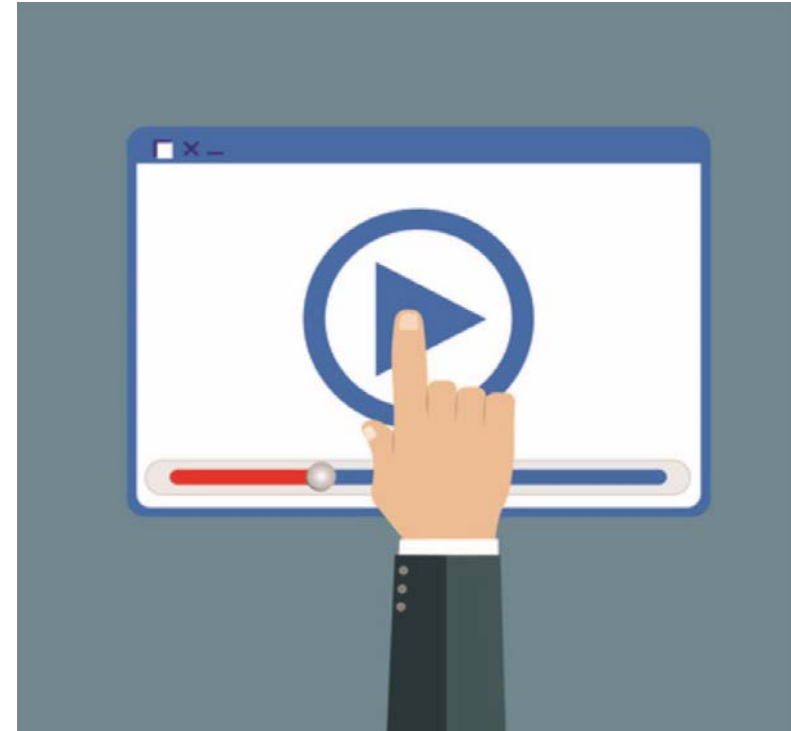
HubSpot

RESEARCH



# Aligning Who and How for Modern Learners

- Learning is flexible and on-demand  
Learners choose their path
- Bite-sized = Right-sized
- Courses encourage discovery
- Offers continuous training
- Includes gamification
- Embeds video and other multimedia



Source: SH!FT DISRUPTIVE ELEARNING (March 2019) <https://www.shiftelearning.com/blog/training-millennials-elearning>



# Leveraging Existing LMS Platforms and Content

Local

State

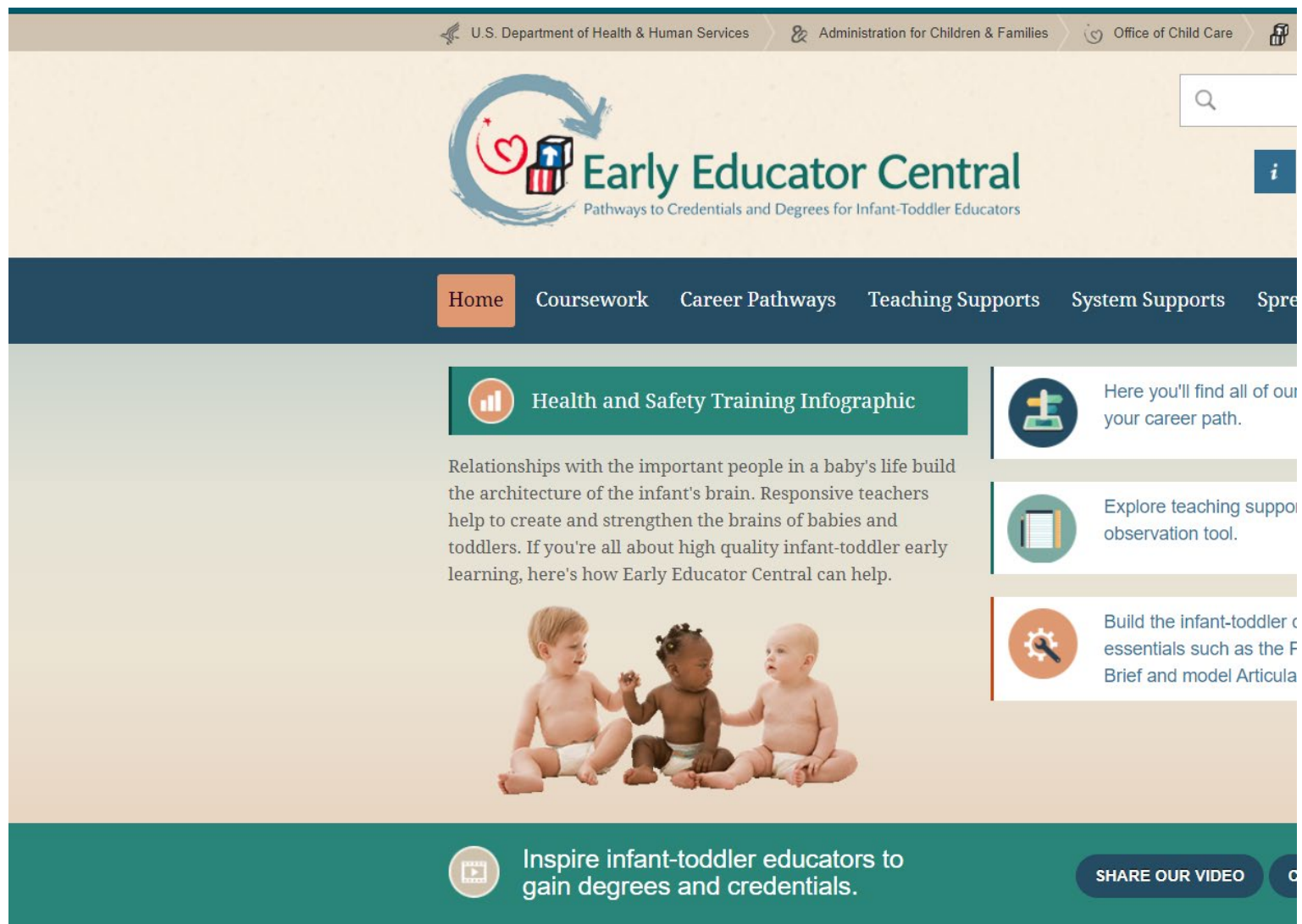
National



- State Early Childhood Professional Development Systems
- 2- and 4- Year State Colleges and Universities
- Local Child Care Resource and Referral Agencies
- Community Adult Education Systems

- Free or Low-Cost Coursework
- Infant Toddler Video Clips
- Course and Training Resources

<https://earlyeducatorcentral.acf.hhs.gov/>



The screenshot shows the homepage of the Early Educator Central website. At the top, there is a navigation bar with the following text: "U.S. Department of Health & Human Services", "Administration for Children & Families", and "Office of Child Care". Below this is a search bar and the website's logo, which features a stylized heart, a block, and a star, with the text "Early Educator Central" and "Pathways to Credentials and Degrees for Infant-Toddler Educators". A dark blue navigation menu contains the following items: "Home", "Coursework", "Career Pathways", "Teaching Supports", "System Supports", and "Spreadsheet". The main content area features a large teal box with a bar chart icon and the title "Health and Safety Training Infographic". Below this title is a paragraph of text: "Relationships with the important people in a baby's life build the architecture of the infant's brain. Responsive teachers help to create and strengthen the brains of babies and toddlers. If you're all about high quality infant-toddler early learning, here's how Early Educator Central can help." Below the text is a photograph of three young children sitting on the floor. To the right of the infographic box are three smaller teal boxes with icons and text: "Here you'll find all of our your career path.", "Explore teaching support observation tool.", and "Build the infant-toddler c essentials such as the F Brief and model Articula". At the bottom of the page, there is a teal banner with a play button icon and the text "Inspire infant-toddler educators to gain degrees and credentials." and a button that says "SHARE OUR VIDEO".



## Emotional Literacy

Learn about practices to teach children emotional vocabulary and help them identify emotions. Discover strategies to talk with families about emotional literacy.



## Building Skills in Two Languages

Discover ways to support children who are dual language learners. Find out how to teach new vocabulary and build language and concept development. Learn how to talk with families about ways to continue to use their home language.



## Using Interactive Media in Early Learning

Explore how to choose, evaluate, and use interactive media with children in early learning settings. Learn about what effective practices are key for interacting with children using media.



## Mindfulness: A Resilience Practice

Learn mindfulness practices to help build teacher resilience. Explore the negative and positive impacts of stress. Use these practices to develop calm and centered states, and lead children in at least one mindfulness practice.



## Practice-Based Coaching: Components and Implementation Strategies

This module describes Practice-Based Coaching (PBC) and its components: Collaborative Partnerships, Shared Goals and Action Planning, Focused Observation, and Reflection and Feedback. Learn about strategies for effective implementation of [PBC](#) and the benefits of using video in [PBC](#).



OFFICE OF HEAD START

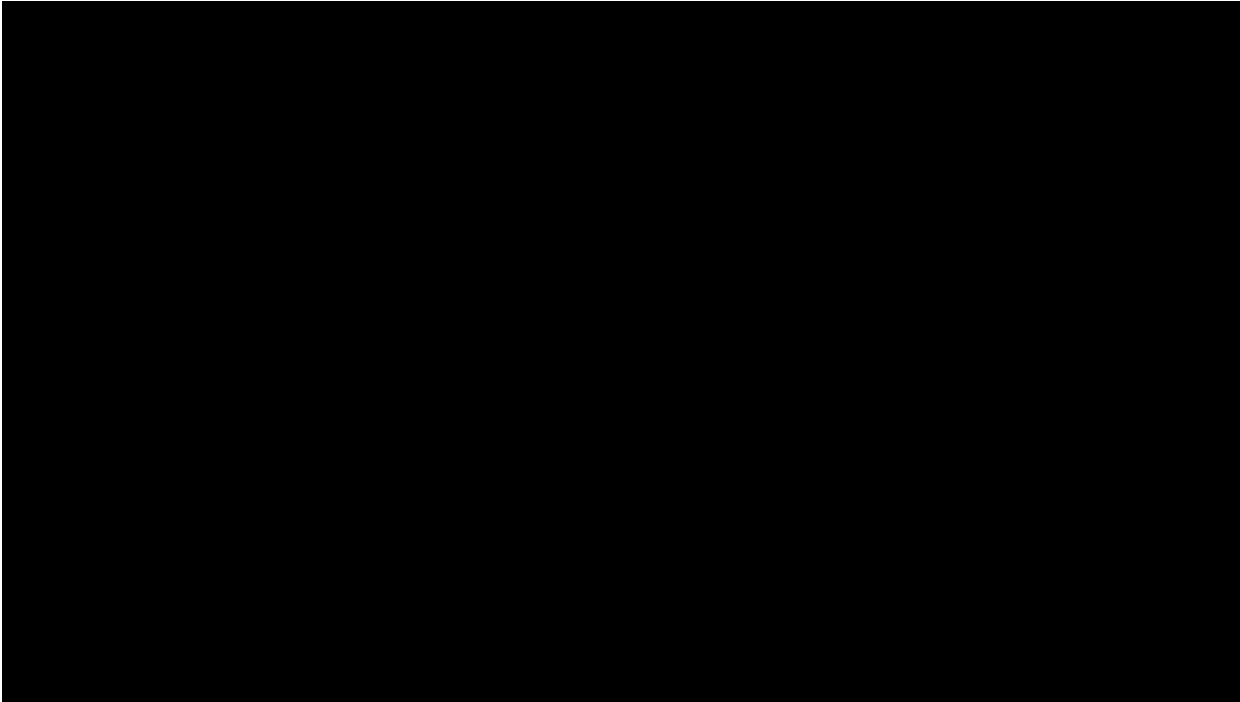
**i**IPD



Early Childhood  
National Centers

INDIVIDUALIZED  
PROFESSIONAL  
DEVELOPMENT

-----  
PORTFOLIO  
ON THE ECLKC



- Online Learning Management Platform
- Accessible via the ECKLC, anytime of day or night, sign up using your existing ECKLC log in
- Many courses offer FREE Continuing Education Credits (CEUs) or certificates of completion
- Supports ongoing professional development for staff in Head Start and child care settings



# Log-in on ECLKC



Search this Website

Search

Home

Share Print

## Login



Username:

Password:

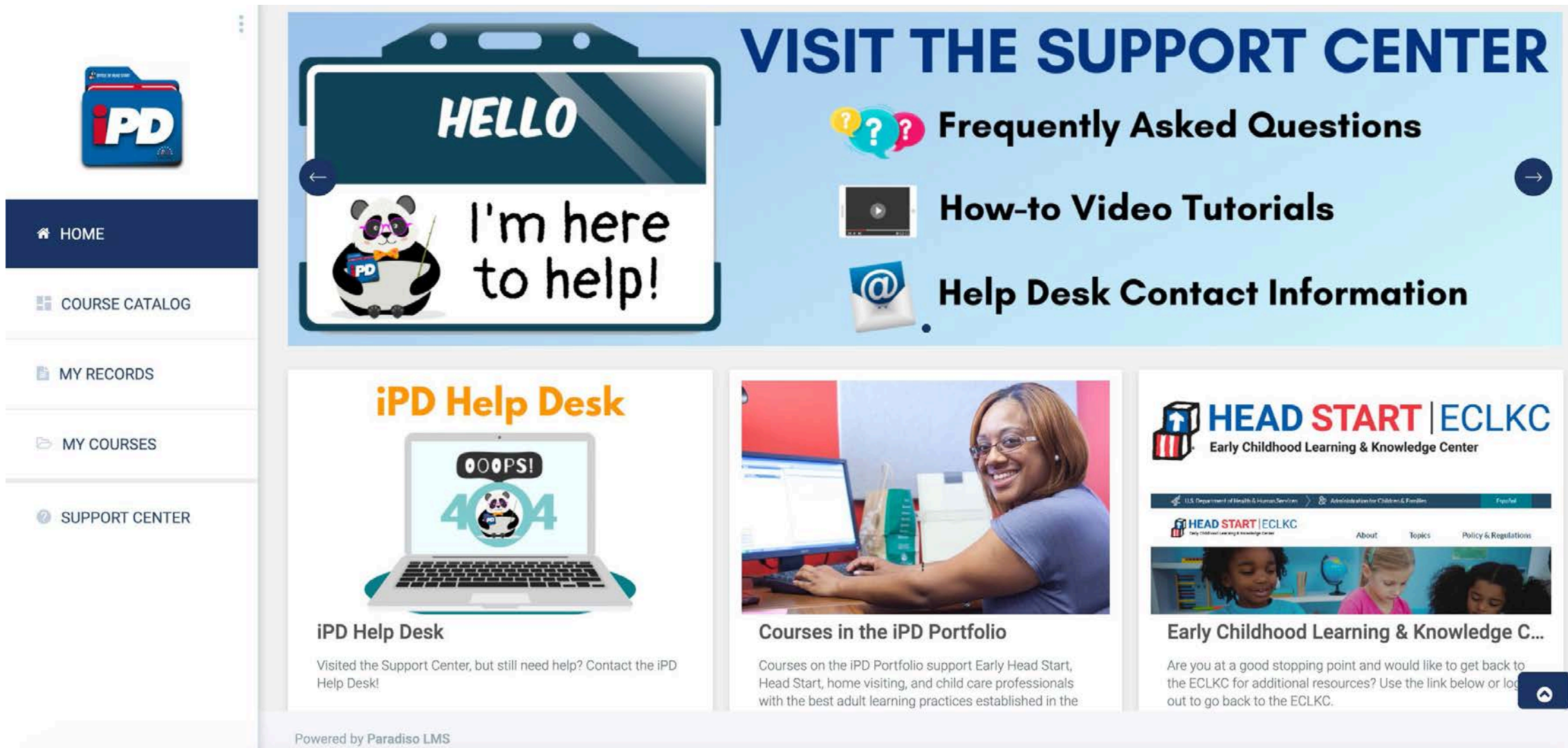
Verification Code:

Email verification code

LOGIN

Forgot your password?

# Key Features of iPD – Test Drive



The screenshot displays the iPD Support Center interface. On the left is a navigation sidebar with the following items: HOME, COURSE CATALOG, MY RECORDS, MY COURSES, and SUPPORT CENTER. The main content area features a large banner with a panda character holding a sign that says "HELLO I'm here to help!". To the right of the banner are three main sections: "Frequently Asked Questions" (with question mark icons), "How-to Video Tutorials" (with a play button icon), and "Help Desk Contact Information" (with an @ icon). Below the banner are three smaller tiles: "iPD Help Desk" (showing a laptop with a "404" error and a panda), "Courses in the iPD Portfolio" (showing a woman at a computer), and "Early Childhood Learning & Knowledge Center" (showing the HEAD START | ECLKC logo and a photo of children).

Powered by Paradiso LMS



## Course catalog

List of courses offered



### Courses Categories

All Courses

Learning Paths

Test (Will be deleted soon)



### Tags

#### Health

Oral Health (1)

Mental Health (1)

Nutrition (1)

#### Family & Community

Parenting (1)

Community Engagement (2)

#### Federal Administrative Procedures

Federal Monitoring (1)

#### Setting

Family Child Care (1)

Search Courses

Filter

1-16 of 25 courses

Addressing Adverse Childhood Experiences in Out-of-School Environments

NATIONAL CENTER ON  
Early Childhood  
Health and Wellness

### Addressing Adverse Childhood Experiences in Out-of-School En...

This module covers the prevalence of Adverse Childhood ...

Hours to complete course : 1.25  
CEU : 0.125

Enroll me

NATIONAL CENTER ON  
Early Childhood  
Health and Wellness

Addressing Substance Misuse Among Expectant Women

An Interactive Learning Module for Home Visitors

### Addressing Substance Misuse Among Expectant Mothers

Substance misuse can cause serious problems for both a ...

Resume

Bang! Squish! Leap! Supporting the A in STEAM with Infants a...

### Bang! Squish! Leap! Supporting the A in STEAM with Infants a...

Just like science technology engineering and math engag...

Enroll me

## My Course

All courses you are currently enrolled in.



**Addressing Adverse Childhood Experiences in Out-of-School Environments**

NATIONAL CENTER ON  
After-school and Summer Enrichment

### Addressing Adverse Childhood Experiences in Out-of-School En...

This module covers the prevalence of Adverse Childhood ...

Resume



**Addressing Substance Misuse Among Expectant Women**

NATIONAL CENTER ON  
Early Childhood Health and Wellness

### Addressing Substance Misuse Among Expectant Mothers

Substance misuse can cause serious problems for both a ...

Resume



**BEGINNING  
TEACHER SERIES  
INFANT AND TODDLER**

### Beginning Teacher Series (Infant & Toddler)

The Beginning Teachers Series is a flexible course desi...

Resume



# Home Visitor e-Institute: Leave the Bag Challenge

- GOAL: Enhance home visitors' capacity and knowledge to support parents' ability to facilitate their child's learning in the home.



Jointly planning learning activities with parents



Use of everyday materials and objects



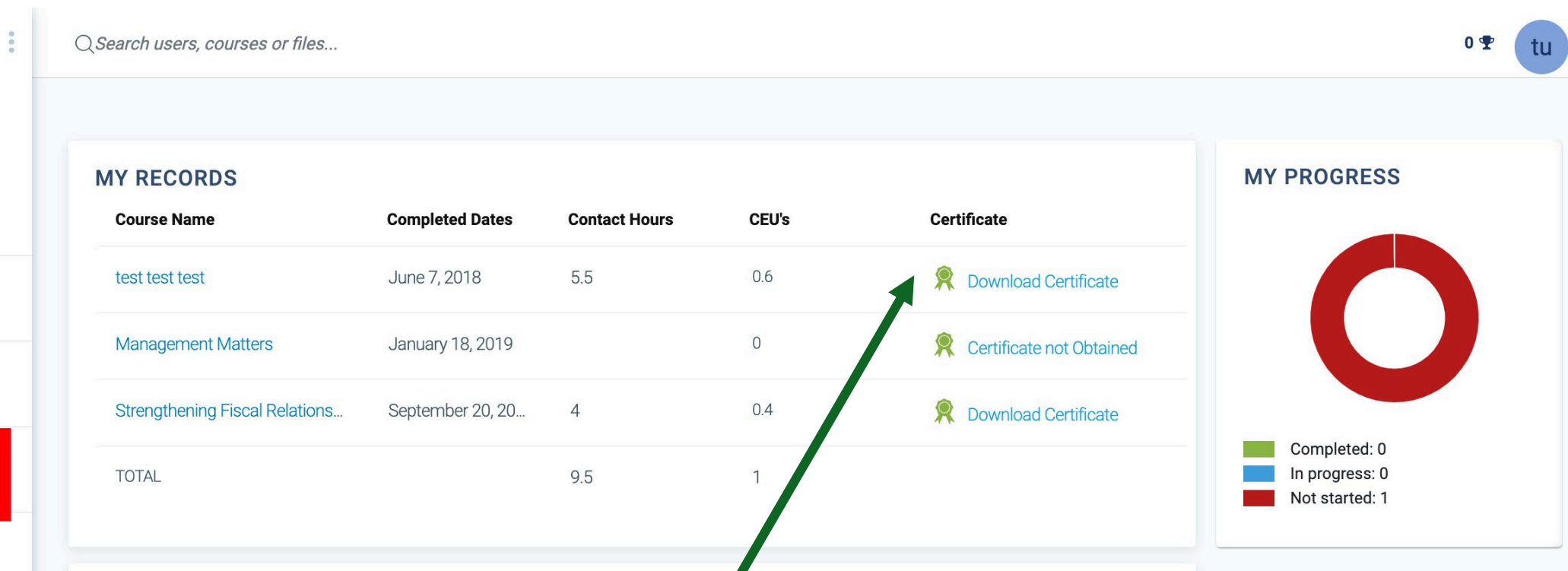
Use descriptive language during daily caregiving & housekeeping routines




Support diverse families including Dual Language Learners (DLLs)

# Home Visitor e-Institute Neighborhood





Search users, courses or files...

0  tu




Early Childhood National Centers

HOME


COURSE CATALOG

**MY RECORDS**

MY COURSES

| Course Name                                       | Completed Dates     | Contact Hours | CEU's | Certificate  |
|---|---------------------|---------------|-------|--|
| <a href="#">test test test</a>                    | June 7, 2018        | 5.5           | 0.6   |  <a href="#">Download Certificate</a>     |
| <a href="#">Management Matters</a>                | January 18, 2019    |               | 0     |  <a href="#">Certificate not Obtained</a> |
| <a href="#">Strengthening Fiscal Relations...</a> | September 20, 20... | 4             | 0.4   |  <a href="#">Download Certificate</a>     |
| TOTAL   |                     | 9.5           | 1     |  |

**MY PROGRESS**



Completed: 0  
In progress: 0  
Not started: 1

Click on the green icon to access CEU certificate upon course completion

## VISIT THE SUPPORT CENTER

HELLO



I'm here  
to help!



Frequently Asked Questions



How-to Video Tutorials



Help Desk Contact Information

### iPD Help Desk



#### CONTACT INFORMATION

Contact us if you have a question, suggestion, issue, or require additional assistance with iPD Portfolio.

If you are having issues with iPD Portfolio or have questions or suggestions, you may contact us via the Help Desk Request Form:

##### Help Desk Request Form

Name \*

First Last

Email Address Associated with ECLKC Account \*

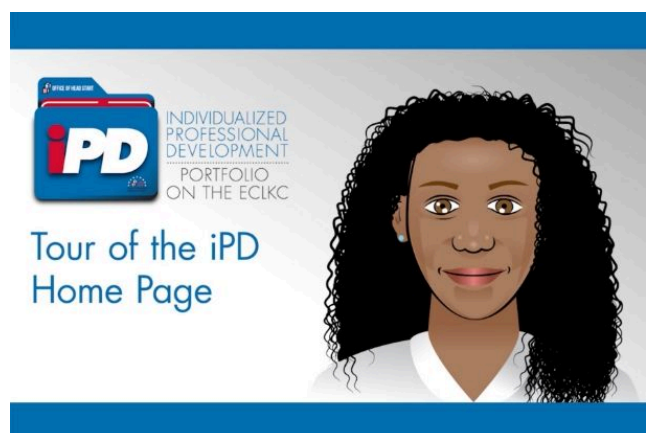
Phone Number (Optional)

-  -

### ### ####

Is this a question related to OCCRR7? \*

Which course or courses do you need support with? [Select All That Apply] \*



## GENERAL OVERVIEW



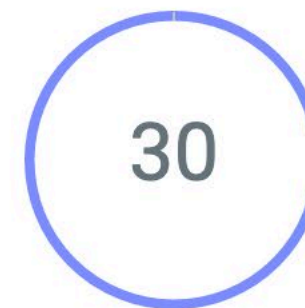
Total  
Users



Enrolled  
Users



Not enrolled  
Users



Total  
Courses

[Addressing Adverse Childhood Experiences in Out-of-School Environments](#) » [Forums](#) » [Discussion](#) » [Thoughts on the Course](#)

Re: Thoughts on the Course  
by [Heather](#) Tuesday, March 31, 2020, 12:01 PM

The course was very informative and interesting. I learned some new things dealing with trauma and adverse childhood experiences. This gives a new look at children that may be struggling and things to think about.



**Questions?**



A vibrant, abstract background composed of numerous vertical, overlapping rectangular bars in various colors including red, orange, purple, blue, green, and yellow. The bars have a textured, splattered appearance with small dots and streaks of color, giving it a dynamic and artistic feel.

# THANK YOU!

For more information, contact:

[Ecdtl@ecetta.info](mailto:Ecdtl@ecetta.info)

Or call (toll-free) 1-844-261-3752

For more iPD information, contact:

[ipd@ecetta.info](mailto:ipd@ecetta.info)