



Use the Chat Box to share:

- How do you prepare for something new in your life, e.g. a new journey, task, or learning experience?



Implementing a Parenting Curriculum Using Implementation Science

Preparing to Implement a Parenting Curriculum:
Installation
October 20, 2017



Series Overview– Register Today!



- September 22, 2017: Choosing a Parenting Curriculum: Exploration
- October 20, 2017: Preparing to Implement a Parenting Curriculum: Installation
- November 10, 2017: Delivering the Parenting Curriculum: Initial Implementation
- December 8, 2017: Maintaining a High-Quality Parenting Program: Full Implementation

<https://eclkc.ohs.acf.hhs.gov/upcoming-events>

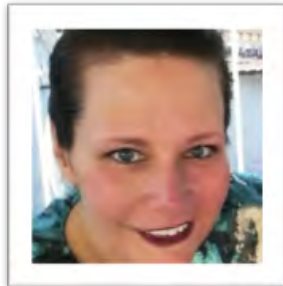
Logistics

- If possible, connect via hard-wired internet (instead of WiFi)
- Help connectivity by closing other programs
- Your phones will be on mute
- To make a comment during the webinar, please use the chat box
- This webinar will be posted on ECLKC

Welcome and Introductions



Cathy Ayoub,
NCPFCE



Brandi Black Thacker,
NCPFCE



W. Oscar Fleming,
NIRN



Shela Jooma,
NCPFCE

Objectives

After this webinar, participants will be able to:

- Discuss how to use coaching plans, practice profiles, and communication protocols
- Identify staff and obtain training to deliver parenting curricula in programs or through community partners
- Engage program leadership and stakeholders to support the use of curricula
- Discuss recruitment and retention strategies

Four Stages of Implementation



Source: Fixsen & Blase, 2008

Recap Exploration



Stages of Implementation



Source: Fixsen & Blase, 2008

Key Tasks

- Identify implementation team members and develop an action plan
- Do a strengths and needs assessment
- Determine the potential fit and feasibility of different parenting curricula
- Develop a theory of change and logic model
- Select a parenting curriculum
 - Align with identified needs
 - Leverage resources and strengths



Parenting Curriculum Decision-Making Checklist

A parenting curriculum should include the following characteristics:

- Structured, sequenced learning activities for parents that focus on two or more of the following domains of learning:
 - ✓ Nurturing (warmth, responsiveness, and sensitivity)
 - ✓ Discipline (providing limits, teaching self-control, handling challenging child behaviors)
 - ✓ Teaching (conveying information or skills)
 - ✓ Language (conversations)
 - ✓ Supervision (watchfulness)
- A manual or guide that describes what learning domains to deliver, how to present them, and in what order
- Available for public use
- Two or more sessions
- Delivered in a time-limited or ongoing manner
- Delivered to parents as the intended and primary audience
- Includes an opportunity for parents to practice skills
- Able to be implemented in early childhood settings or community-based organizations
- Research-based

The Hexagon Tool

The Hexagon Tool can be used as a planning tool to evaluate evidence-based programs and practices during the exploration stage of implementation.

See the Active Implementation Hub Resource Library <http://implementation.fpg.unc.edu>

EBP:			
5 Point Rating Scale: High = 5; Medium = 3; Low = 1. Midpoints can be used and scored as a 2 or 4.			
	High	Med	Low
Need			
Fit			
Resource Availability			
Evidence			
Readiness for Replication			
Capacity to Implement			
Total Score			



*Reproduced with permission from Blase, K., Kiser, L., and Van Dyke, M. (2013). The Hexagon Tool: Exploring Context. Chapel Hill, NC: National Implementation Research Network, EPG Child Development Institute, University of North Carolina at Chapel Hill. Available at: http://implementation.fpg.unc.edu/sites/implementation.fpg.unc.edu/files/resources/2013_TheHexagonTool_0.pdf

© 2013 Lauren Kiser, Karen Blase, and Steve Fawcett. Addressed from work by Lauren E. Blase, Michelle Zlot, Robert A. Zachry, and Steve Fawcett (2013)



POLL

Which of these activities have you completed? (Check all that apply.)

- Develop an implementation team
- Develop a work plan
- Identify the strengths and needs of families
- Explore possible parenting curricula
- Choose parenting curriculum



Stages of Implementation



Source: Fixsen & Blase, 2008

Installation Stage

- Key Terms
- Key Tasks
- Key Take-Away Messages



Key Terms

- Implementation Infrastructure – The characteristics, capabilities, skills and attitudes of both individuals and organizations that lead to successful implementation. These include individual skills and competencies as well as organizational policies, structures and procedures.
- Practice Guidance – A document that clearly describes how to carry out each component of the parenting curriculum. This may also be referred to as a facilitator’s guide or curriculum manual.
- Data and Feedback Loops – The communication processes for using data to guide decision-making. This involves collecting, analyzing, and using data as feedback to inform the implementation process in an ongoing way.
- Dosage – Duration and frequency of which a curriculum is offered.
- Fidelity – Extent to which the curriculum is delivered as intended, according to the original model.

Key Tasks

- Develop implementation team members' competencies
- Develop a system of high-quality communication
- Identify and recruit staff for initial implementation
 - Train staff for initial implementation
 - Identify, hire, and train coaches
 - Develop coaching plans and practice guidance

Key Tasks (cont'd)

- Set up or modify existing data systems
- Review organizational policies and procedures
- Engage leadership inside and outside the program, state, or network
- Develop recruitment and retention strategy for parents and families



Q & A

What outstanding questions do you have about installing a parenting curriculum in your program?

Please use the chat box.



Key Take-Away Messages

- This stage sets the conditions for success
- At least three to six months may be necessary to establish resources and procedures
- The curriculum developer is an important ally in this stage:
 - 1302.51(b)
 - *A program that chooses to make significant adaptations to the parenting curriculum to better meet the needs of one or more specific populations must work with an expert or experts to develop such adaptations.*



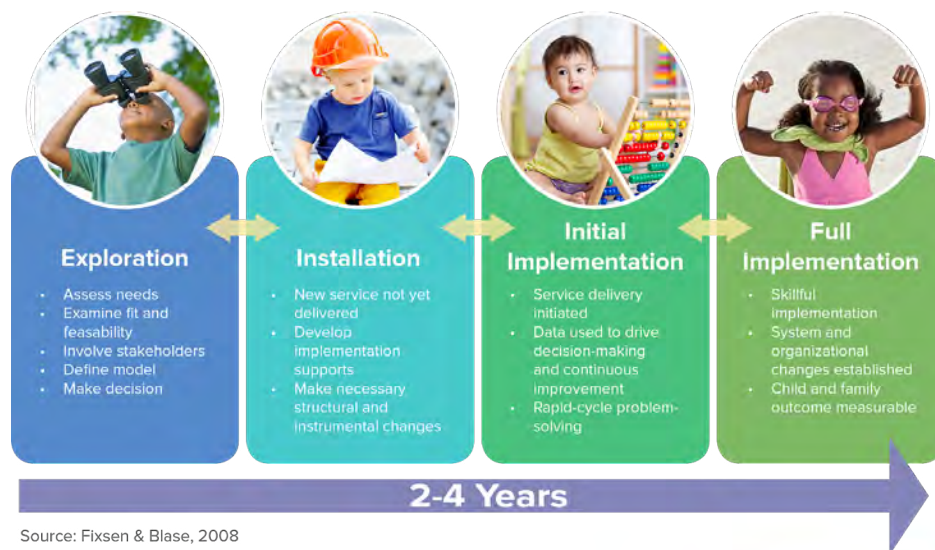
Q & A

Given where you are in the process, what is your best next step?

Please use the chat box.

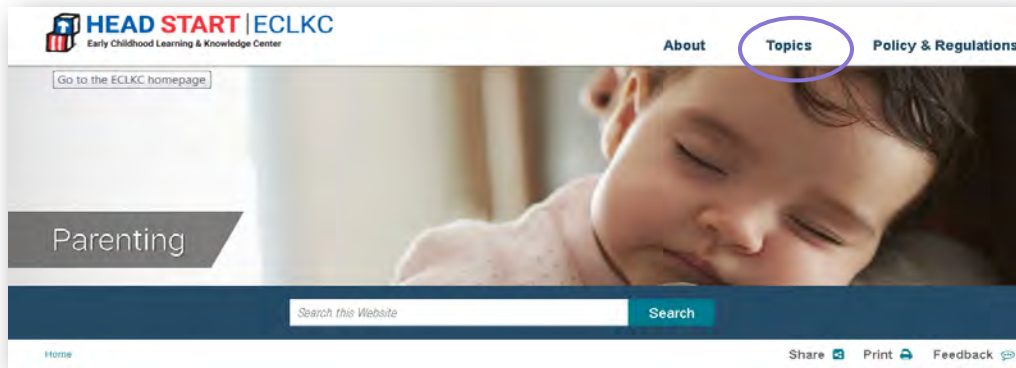


Key Functions at Each Stage



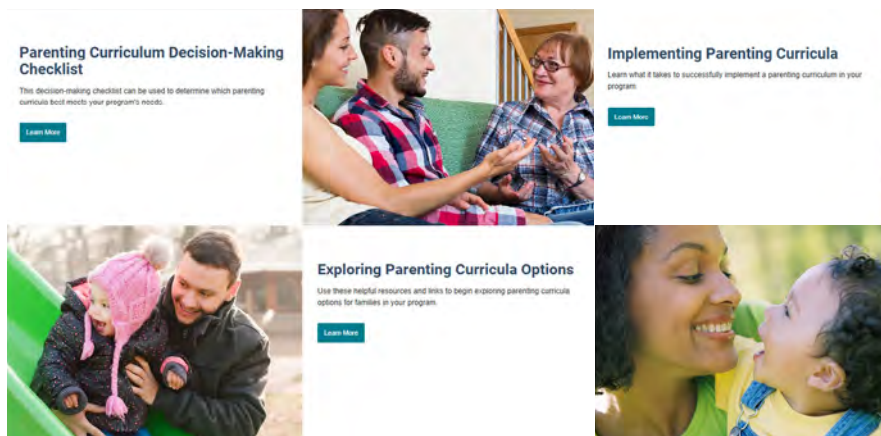
Source: Fixsen & Blase, 2008

Resources to Share



<https://eclkc.ohs.acf.hhs.gov/parenting>

Resources to Share



<https://eclkc.ohs.acf.hhs.gov/parenting>

Resources to Share



<https://eclkc.ohs.acf.hhs.gov/publication/parenting-curriculum-decision-making-checklist>

Resources to Share



Exploring Parenting Curricula Options

Use these helpful resources and links to begin exploring parenting curricula options for families in your program.

Parenting Curricula Resources

- Compendium of Parenting Interventions
- An Introduction to the Compendium of Parenting Interventions

Registries that Include Parenting Curricula

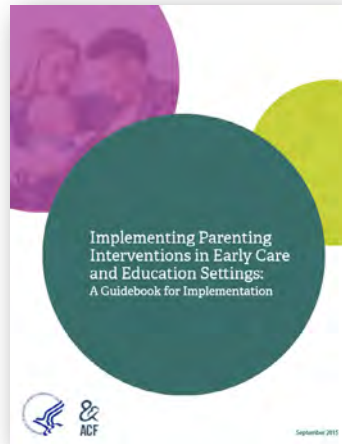
- Blueprints for Healthy Youth Development [↗](#)
- California Evidence-Based Clearinghouse for Child Welfare (CEBC) [↗](#)
- National Registry of Evidence-based Programs and Practices (NREPP) [↗](#)

Related Resources

- Appendix C, Table of Parenting Interventions: Table C-1. Evidence-Based Interventions That Support Parenting [↗](#)

<https://eclkc.ohs.acf.hhs.gov/parenting/article/exploring-parenting-curricula-options>

Resources to Share



<https://eclkc.ohs.acf.hhs.gov/parenting/article/implementing-parenting-curricula>

Don't Miss Upcoming Webinars in the Series – Register Today!



- September 22, 2017: Choosing a Parenting Curriculum: Exploration
- October 20, 2017: Preparing to Implement a Parenting Curriculum: Installation
- November 10, 2017: Delivering the Parenting Curriculum: Initial Implementation
- December 8, 2017: Maintaining a High-Quality Parenting Program: Full Implementation


<https://eclkc.ohs.acf.hhs.gov/upcoming-events>


Join the Chat After the Webinar!



Online Survey and Certificates

- Your feedback is important to us!
- A Thank You email with a survey link is on its way! Keep an eye out for it in your inbox.
- You can print your certificate upon completion of the survey.



 NATIONAL CENTER ON
Parent, Family and Community Engagement

For more information about this resource, please contact us:
pfcewebinars@ecetta.info | 1-866-763-6481

