

## Lobby Icebreaker: “Out-of-the-Box” Ideas

Let’s explore creative community partnerships ideas to serve the following families:

- Families are in need of transportation to support new employment
- Many families are experiencing homelessness in your community
- Many of your families have recently immigrated to the area
- Family members feel unsafe or are experiencing harm



National Center on Parent, Family, and Community Engagement

**NATIONAL CENTER ON**  
Early Childhood National Centers  
Parent, Family and Community Engagement

# Strengthening Family Well-Being Through Engaged Community Partnerships

March 17, 2020

Community Engagement Webinar Series

The slide features a blue background with a white and orange horizontal stripe. On the left, there are three circular images: a woman holding a child, a group of people in a meeting, and three children. On the right, there is a stylized illustration of a town with a sun, houses, and people. The text is centered and right-aligned.

## Navigating Adobe

- General Chat
- Interactive Functions
- Download and Web Link Pods
- Recording for ECLKC



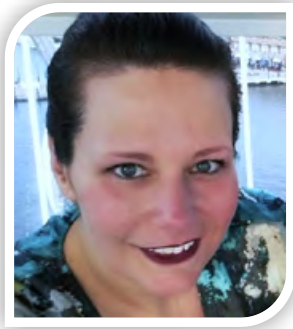
National Center on Parent, Family, and Community Engagement

## Welcome and Introductions



National Center on Parent, Family, and Community Engagement

## NCPFCE Facilitators and Federal Partner



Brandi Black Thacker



Dr. Guylaine L. Richard



Kiersten Beigel,

Comprehensive Services &  
TTA Division,  
Office of Head Start

National Center on Parent, Family, and Community Engagement

## Community Engagement Webinar Series

- 1. Strengthening Family Well-Being Through Engaged Community Partnerships. March 17, 2020.**
2. Community Partnerships for Family Engagement in the Transition to Kindergarten. April 14, 2020.
3. Head Start Community Partnerships with Child Welfare. June 2, 2020.

**Webinar Time: 3:00 – 4:30 p.m. ET**

**Join the Chat After the Webinar! 4:30 – 4:45 p.m. ET**



National Center on Parent, Family, and Community Engagement

## Learning Objectives

- Define community engagement.
- Discuss creative strategies programs and community partners can use to foster collaboration.
- Examine the six-step process that supports community engagement in practice.
- Discuss the strengths and challenges associated with the coordination of services.
- Identify “outside of the box” community partnerships and how programs can foster relationships with community partners in new and innovative ways.

National Center on Parent, Family, and Community Engagement

## Key Messages

- When partners work well together, it’s a win-win for Head Start/Early Head Start, their community agencies, and most importantly, for children, families, and communities.
- Creating a shared vision between engaged community partners fosters and strengthens family well-being.
- Strong and sustained partnerships require ongoing engagement between all stakeholders.



National Center on Parent, Family, and Community Engagement

## Head Start Program Performance Standards

- §1302.53(a)(1): A program must establish ongoing collaborative relationships and partnerships with community organizations.....
- §1302.53(b): Coordination with other programs and systems. A program must take an active role in promoting coordinated systems of comprehensive early childhood services to low-income children and families in their community.....

National Center on Parent, Family, and Community Engagement

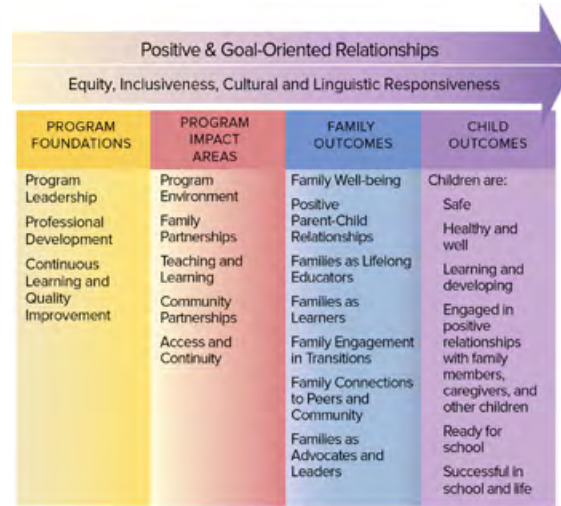
## Defining “Community Engagement”

- Community engagement refers to the mutually respectful, strengths-based interactions of Head Start and Early Head Start staff and families with community members and agencies at all levels.
- These partnerships support parents’ roles as valued community members and their progress toward their goals for themselves and their children.



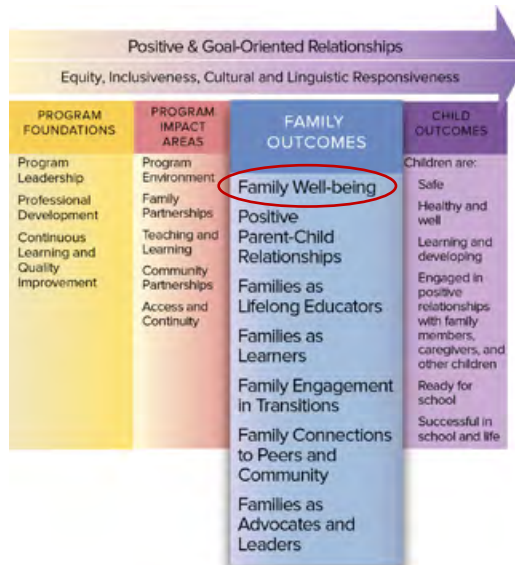
National Center on Parent, Family, and Community Engagement

# How Does the PFCE Framework Support Community Partnerships?



National Center on Parent, Family, and Community Engagement

# Focus on Family-Being



National Center on Parent, Family, and Community Engagement

## Poll: Partnerships in Your Community

Think about the partnerships available in your community to assist families achieving their well-being.

- How many did you come up with?
- In the chat box, share which one would you feel is the most successful partnership? Why?



National Center on Parent, Family, and Community Engagement

## Three Priorities for Community Engagement

Engaged community partnerships benefit children, families, programs and staff, other agencies, and communities. Partners are more likely to meet their goals by working together. Head Start and Early Head Start programs can engage with community partners to focus on three priorities and learn how to best support:

1. Individual Families in Head Start and Early Head Start
2. Families in Head Start and Early Head Start
3. Families in the Community

National Center on Parent, Family, and Community Engagement

## Forming Positive, Respectful, Mutually Beneficial Relationships with Community Partners



National Center on Parent, Family, and Comm

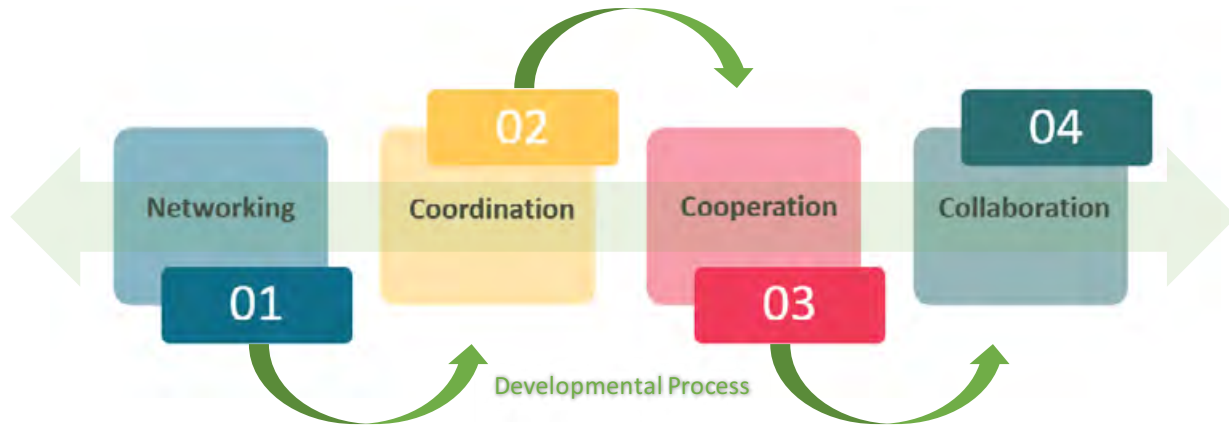
## A Model for Community Engagement



National Center on Parent, Family, and Community Engagement

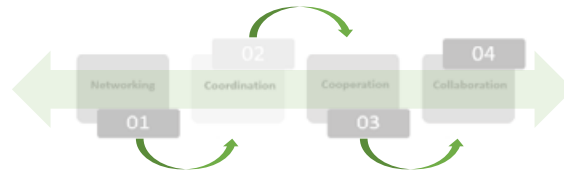


## Developmental Continuum of Collaboration



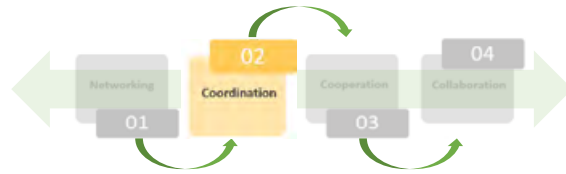
Adapted from the QUILT (Quality in Linking Together) Project (Community Development Institute, Education Development Center, & National Child Care Information Center). QUILT was funded by the U.S. Department of Health and Human Services, Administration for Children and Families, 2002.

National Center on Parent, Family, and Community Engagement



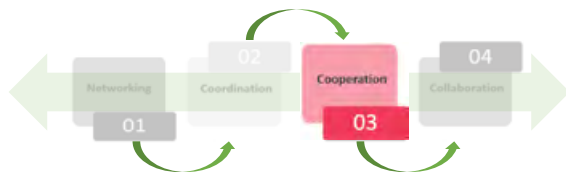
Staff exchange information about community programs and services.

National Center on Parent, Family, and Community Engagement



Staff work with other community agencies to avoid duplication of efforts or to fill gaps in services.

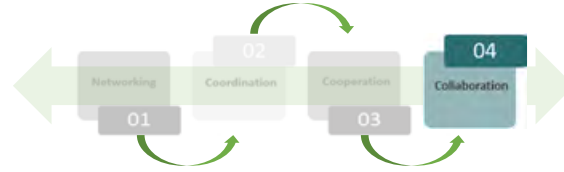
National Center on Parent, Family, and Community Engagement



Two or more programs conduct joint activities to meet their individual program goals.

National Center on Parent, Family, and Community Engagement

**04**  
**Collaboration**



Programs working together toward common goals that could not be achieved by any program acting alone.

National Center on Parent, Family, and Community Engagement

Reciprocal • Increasing Social Capital • Systemic Integrated Process  
• Community Outcomes



National Center on Parent, Family, and Community Engagement

## Benefits of Community Engagement for Children and Families

- Increase access
- Reduce confusion
- Create learning environments
- Increase community safety/responsiveness



National Center on Parent, Family, and Community Engagement

## Benefits of Community Engagement for Program Staff

- Assisting with community assessments
- Managing resources
- Enhancing program planning
- Renewing of staff
- Acquiring new viewpoints
- Reducing risks
- Contributing to the community



National Center on Parent, Family, and Community Engagement

## Benefits of Community Engagement for Communities

- Creating community solutions
- Less duplication of effort/more efficiency
- Expanding benefits to other families
- Strengthening communities



National Center on Parent, Family, and Community Engagement

## Pop Quiz: Multiple Choice!

1. Program A and Agency B work together to support children with disabilities
2. When parents need job training or placement program A reaches out to Agency C to fill a gap
3. In order to increase safety of the neighboring park, HS staff partner with the police and other agencies
4. Staff share flyers with this new laundromat store to share information about the families

- A. Networking
- B. Coordinating
- C. Cooperating
- D. Collaborating

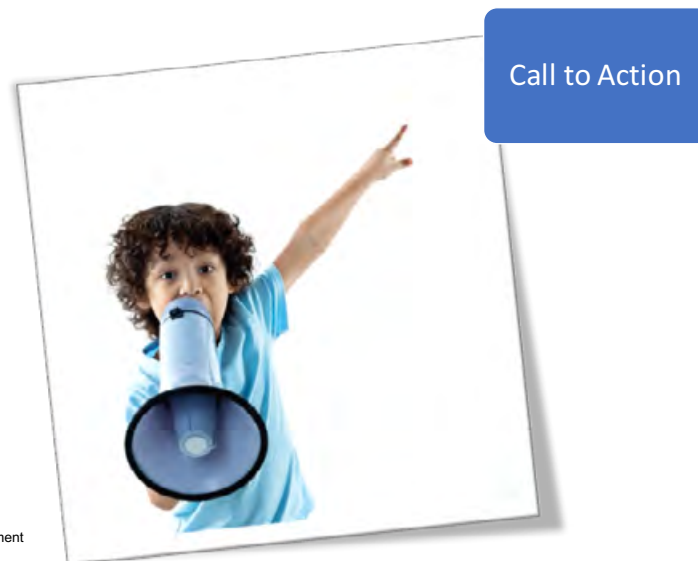
National Center on Parent, Family, and Community Engagement

## Community Engagement in Practice



National Center on Parent, Family, and Community Engagement

## Community Engagement in Practice



National Center on Parent, Family, and Community Engagement

## Community Engagement in Practice

Community  
Partners



National Center on Parent, Family, and Community Engagement

## Community Engagement in Practice

Building a Base  
of Common  
Knowledge



National Center on Parent, Family, and Community Engagement

## Community Engagement in Practice

Creating  
Shared Vision



National Center on Parent, Family, and Community Engagement

## Community Engagement in Practice

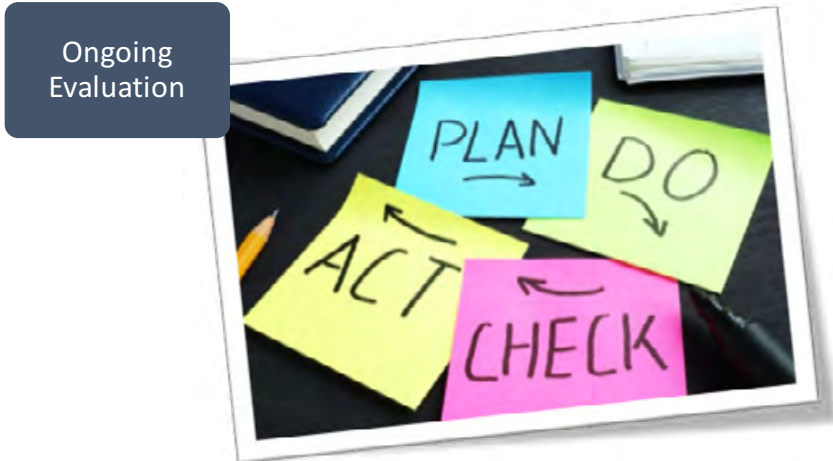
Planning for  
Community  
Engagement



National Center on Parent, Family, and Community Engagement



## Community Engagement in Practice



National Center on Parent, Family, and Community Engagement

## Community Engagement in Practice



National Center on Parent, Family, and Community Engagement

## Key Takeaways

- Community Engagement requires a shared vision, commitment, and intentional planning.
- The short and long-term investments made with community partners are worth it!
- Building relationships with community partners is a flexible process mirroring the involvement to engagement journey we travel with families.



National Center on Parent, Family, and Community Engagement

## Community Engagement Webinar Series

1. Strengthening Family Well-Being Through Engaged Community Partnerships. March 17, 2020.
2. **Community Partnerships for Family Engagement in the Transition to Kindergarten. April 14, 2020.**
3. Head Start Community Partnerships with Child Welfare. June 2, 2020.

**Webinar Time: 3:00 – 4:30 p.m. ET**

**Join the Chat After the Webinar! 4:30 – 4:45 p.m. ET**

National Center on Parent, Family, and Community Engagement

## MyPeers Communities

- ✓ **ERSEA Managers-Coordiators**
- ✓ **PFCE Deepening Practice Communities**
- Already a MyPeers member? Find the ERSEA Managers-Coordiators or PFCE Deepening Practice communities in MyPeers under “All Communities,” and select the blue “Join” button.
- Not a member of MyPeers? Sign up!
  - ✓ Visit the MyPeers page on the Early Childhood Learning Knowledge Center (ECLKC).
  - ✓ Scroll to the bottom and select “Create an Account.”
  - ✓ Fill out the form and within a few days you will receive an email from MangoApps with your login information.

National Center on Parent, Family, and Community Engagement

## Want to Take Your Family Engagement Practice to the Next Level?

### Sign Up for Text4FamilyServices Today!

- This FREE text messaging service was designed for family services providers.
  - It is also available in Spanish (español).
- Just text **“PFCE”** to **22660** to sign up!



National Center on Parent, Family, and Community Engagement

# Reflections and Questions



National Center on Parent, Family, and Community Engagement



NATIONAL CENTER ON  
Parent, Family and Community Engagement

PFCE@eclkc.info or call (toll-free) 1-866-763-6481  
<http://eclkc.ohs.acf.hhs.gov/hslc/tta-system/family>